

FED. ROAD DIV. NO.	STATE	PROJECT NO.	FISCAL YEAR	SHEET NO.	TOTAL SHEETS
6	ARK.	7-093-1(24) Old 17-55-1(22) New		115	347
STATE JOB NO. 10 616					

JOB 10616  
SUMMARY OF QUANTITIES  
SOUTH BLYTHEVILLE FRISCO OVERPASS AT STA. 65 + 57.70

TWO BRIDGES N.B.Br.No. 3163-B; S.B.Br.No. 3163-A CODE TYPE X-131

ITEM NO.	ITEM	UNIT	ABUTS 1N. & 15N. 1S. & 15S	BENTS 1N. THRU 6N. 9N. THRU 14N. 1S. THRU 7S. 10S. THRU 14S	BENTS 7N. & 8N. 8S. & 9S	SPANS 1N. THRU 5N. 9N. THRU 14N. 1S. THRU 6S. 10S. THRU 14S	SPANS 6N. & 9S	SPANS 8N. & 7S	SPANS 7N. & 8S	JOB TOTAL
SP801-2	DRY EXCAVATION FOR STRUCTURES	CU. YD.	93	2,130	459	—	—	—	—	2,682
SP & 802	CLASS "A" CONCRETE FOR BRIDGES	CU YD.	—	1,338	488	—	—	—	—	1,826
SP & 802	CLASS "S" CONCRETE FOR BRIDGES	CU YD.	179	351	101	1,386	102	94	156	2,369
SP & 803	REINFORCING STEEL	LB.	12,435	166,219	35,539	251,502	19,298	17,819	39,508	542,320
SP	ALUMINUM BRIDGE RAILING	LIN. FT.	—	—	—	2970.00	218.50	200.74	142.52	3531.76
SP & 807	STRUCTURAL STEEL IN BEAM SPANS	LB.	—	—	—	1,463,473	100,438	90,986	—	1,654,897
SP804-4	BEARING PILES(14" Sq or 16" RND)	LIN. FT.	2,410	15,190	3845	—	—	—	—	21,445
SP 804-4	LOADING TEST PILES	EACH	2	2	1	—	—	—	—	5
929	BRIDGE NAME PLATES (TYPE "C")	EACH	1	—	—	—	—	—	—	1

Note: Estimated quantity of Bearing Piles is based on  
14" square precast reinforced concrete piles.

SOUTH BLYTHEVILLE FRISCO OVERPASS  
AT STA. 65 + 57.70  
TABLE OF QUANTITIES  
MISSISSIPPI & CRITTENDEN COUNTIES  
FA 1 55 . INTERSTATE HIGHWAY  
SECTION IV  
ARKANSAS STATE HIGHWAY COMMISSION  
LITTLE ROCK, ARK.

DRAWN BY S.T.S. DATE NOV. 1957 SCALE NOT TO SCALE  
TRACED BY S.T.S. DATE NOV. 1957  
CHECKED BY J.H.G. DATE DEC. 1957 SHEET 2 OF 13

SVERDRUP & PARCEL, INC.  
ENGINEERS - ARCHITECTS  
ST. LOUIS, MO.

BRIDGE NO. 3-63A-88 DRAWING NO. 10192

1343-S  
575/387

FED. ROAD DIV. NO.	STATE	PROJECT NO.	FISCAL YEAR	SHEET NO.	TOTAL SHEETS
6	ARK	1-03-1220 Old 1-55-12262 New		114	347
STATE JOB NO. 10616					

### GENERAL NOTES

**SPECIFICATIONS:** Arkansas State Highway Commission (1940 Standard) and Special Provisions.

**DESIGN:** In accordance with the A.A.S.H.O. Standard Specifications for Highway Bridges, 1953 Edition.  
Moment in concrete slab spans is distributed between slab and curb in accordance with University of Illinois Experiment Station Bulletin No 346.

**DESIGN LOADING:**  
Beam Spans: Live Load H20-S16-44.  
Concrete Slab Spans: 1956 Special Military Loading for Interstate Highways (see diagram).

**DESIGN UNIT STRESSES:**  
Concrete (Class "S")  $f_c = 1200$  p.s.i. ( $n=10$ )  
(Class "A")  $f_c = 840$  p.s.i. ( $n=15$ )  
Reinforcing Steel  $f_s = 20000$  p.s.i.  
Structural Steel  $f_s = 16000$  p.s.i.

**CONCRETE:** All concrete in bent caps, abutments, wing walls, and superstructure shall be class "S" air-entrained. Concrete in bent footings and columns shall be Class "A" air-entrained. All exposed corners of concrete shall be beveled  $\frac{1}{4}$ " unless otherwise noted.

**RUBBED FINISH:** Exposed surfaces of wing walls and vertical surfaces of curbs and parapets shall receive a rubbed finish after removal of forms.

**REINFORCEMENT:** Reinforcing steel shall be intermediate grade. Dimensions to reinforcing steel on drawings are to  $\frac{1}{2}$ " of bars, except where the clear distance is noted from the face of concrete. Bars shall be lapped a minimum of 30 diameters at splices unless otherwise shown or noted.

**CONSTRUCTION JOINTS:** Construction joints shall be made only where shown on the plans.

**WELDING:** All welding shall be in accordance with the American Welding Society Standard Specifications for Welded Highway and Railway Bridges, 1956 Edition. Qualification of welding operators will be required.

**PILING:** For type of piling see detail and Special Provisions. Piles shall be driven to a minimum capacity of 28 tons each at bents and 23 tons each at abutments. Minimum penetration into natural ground shall be 20 feet for all piles. Test piles shall be driven at locations shown on the Plans and loaded in accordance with the Special Provisions except loading tests may be waived by the Engineer if the formulae in the Special Provisions indicate that adequate capacity has been attained. The lengths for ordering standard piles shall be determined by the Engineer from the test piles.

**BRIDGE NAME PLATE:** One name plate shall be furnished at the location shown on the Plans bearing the legend "South Blytheville Frisco Overpass" and showing year of construction. Details shall conform to Type 1 name plate shown on Arkansas State Highway Commission drawing No. 2389.

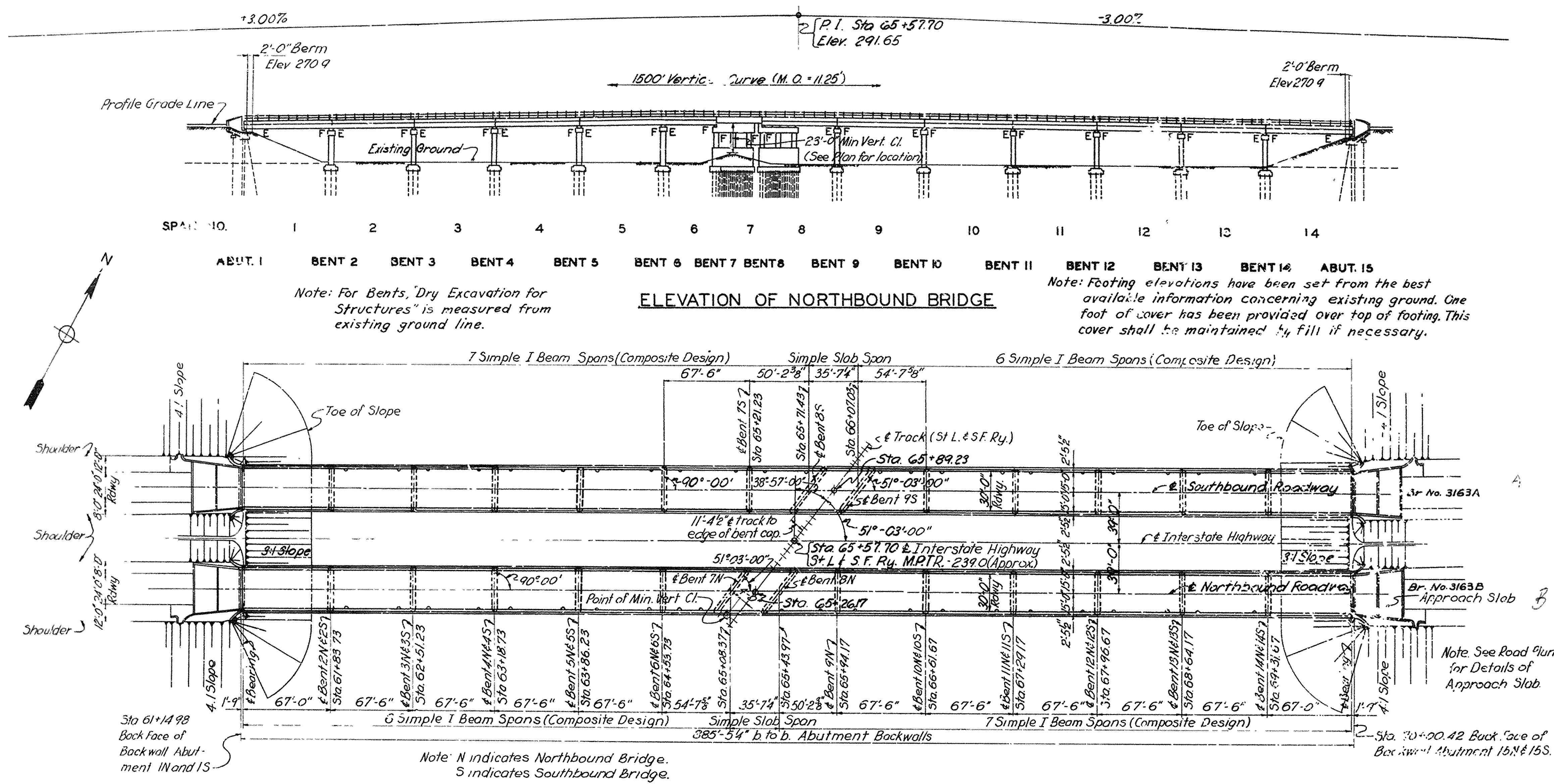
### SOUTH BLYTHEVILLE FRISCO OVERPASS AT STA. 65+57.70

#### GENERAL PLAN AND ELEVATION

MISSISSIPPI & CRITTENDEN COUNTIES  
FAI 55 INTERSTATE HIGHWAY

#### SECTION V ARKANSAS STATE HIGHWAY COMMISSION

LITTLE ROCK, ARK.  
DRAWN BY: W.H.B. DATE: AUG. 1957 SCALE: NOT TO SCALE  
TRACED BY: J.M. DATE: AUG. 1957  
CHECKED BY: R.E.B. DATE: NOV. 1957  
BRIDGE NO. 3163A & B DRAWING NO. 10191

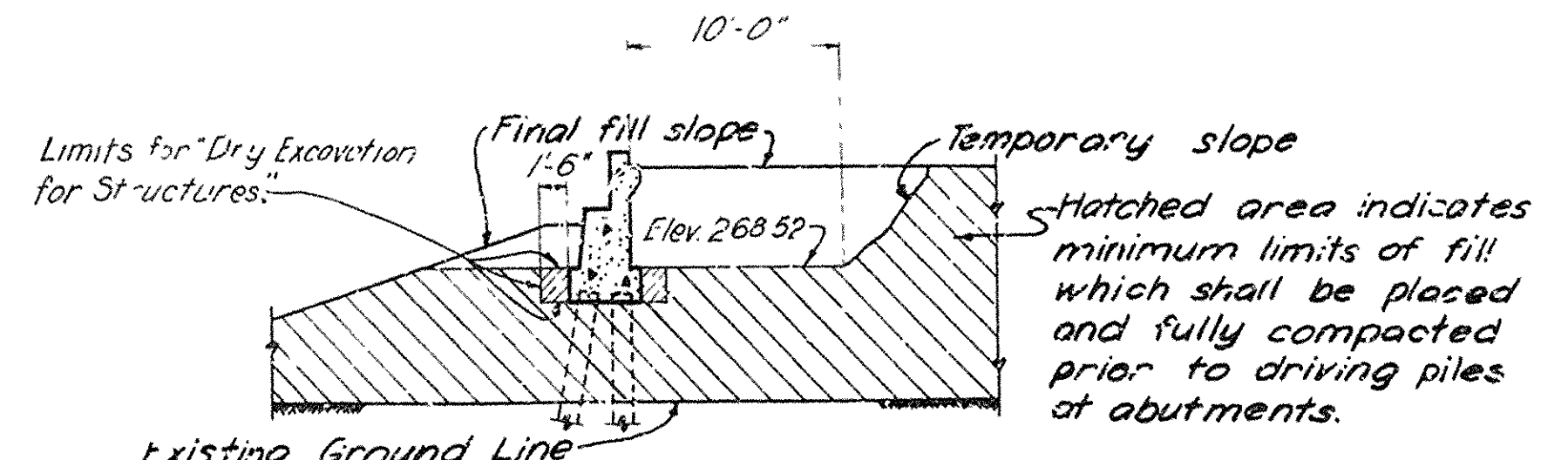
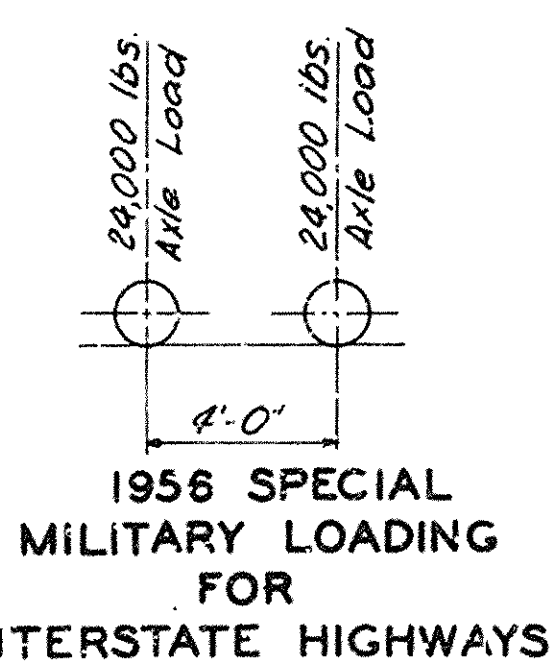


### ELEVATION OF NORTHBOUND BRIDGE

### PLAN

### INDEX OF DRAWINGS

- |     |   |       |
|-----|---|-------|
| 1   | GENERAL PLAN AND ELEVATION                                    | 10191 |
| 2   | TABLE OF QUANTITIES   | 10192 |
| 3   | ABUTMENTS 1 AND 15N & S                                       | 10193 |
| 4   | BENTS 2 THRU 6 N & S, 7S, 9N AND 10 THRU 14 N & S             | 10194 |
| 5   | BENTS 7N, 8N, 8S AND 9S                                       | 10195 |
| 6   | STEEL FRAMING PLAN AND SECTIONS                               | 10196 |
| 7   | STEEL DETAILS   | 10197 |
| 8   | SLAB DETAILS - BEAM SPANS                                     | 10198 |
| 9   | SLAB SPAN DETAILS - SPANS 7N & 8S                             | 10199 |
| 10  | HANDRAIL, SHOES AND ANCHOR BOLT PLAN                          | 10200 |
| 11  | BAR LIST  | 10201 |
| *12 | TYPICAL BAR TYPES AND HOOK DIMENSIONS                         |       |
| *13 | TYPICAL DETAILS OF SUPPORTS AND SPACERS FOR REINFORCING STEEL |       |
- \* These sheets not included. Details are some as shown on corresponding sheets for East Blytheville Frisco Overpass at Sta. 201+85.30



### FILL AT ABUTMENTS

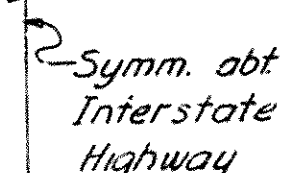
Note: Limits of fill and "Dry Excavation for Structures" for footings under wing walls are similar.

Note: Do not scale this drawing. Follow dimensions.

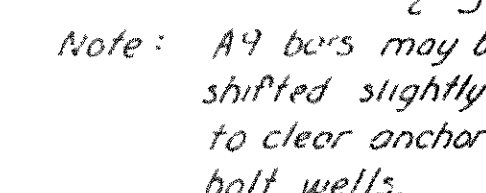
SUBMITTED BY:  
REGISTERED PROFESSIONAL ENGINEER  
ARKANSAS NO. 629

SVERDRUP & PARCEL, INC.  
ENGINEERS - ARCHITECTS  
ST. LOUIS, MO.





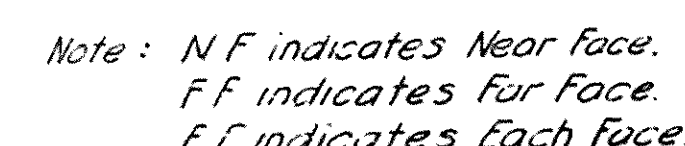
Panel 1' 4" x 1'-2" recessed 1" on roadway side of wing wall  
Place Standard Bridge Name  
Plate in panel on this wing  
wall of Abut 1, Northbound  
Bridge only. - 2-5A-



FOOTING PLAN

Abut 1, Southbound Bridge & Abut 15  
Northbound Bridge opposite hand.

\* Indicates test pile  
Note: Estimated lengths are based on  
known precast reinforced concrete piles.  
Note: Do not scale this drawing. Follow dimensions.

[illegible]

Note: Reinf. Steel  
in Bridge Seat  
and Footing not  
shown except  
for A7 dowels.



*Note: Timber Header shall remain in place until approach slab is placed. See Road Plans for permanent joint material. Cost of timber Headers shall be included in unit price bid for other items.*



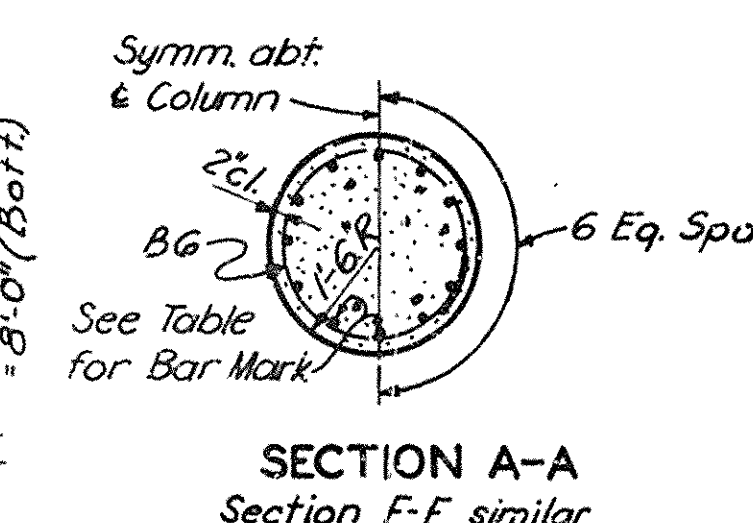
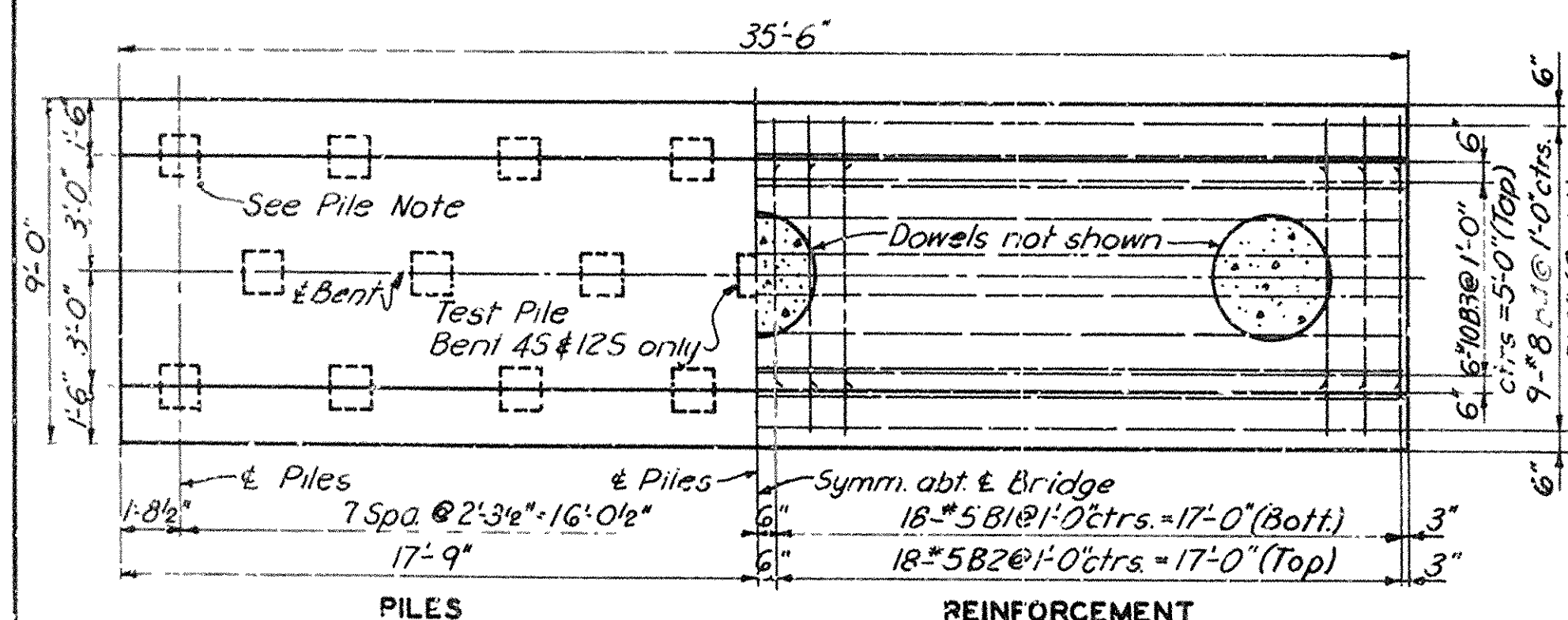
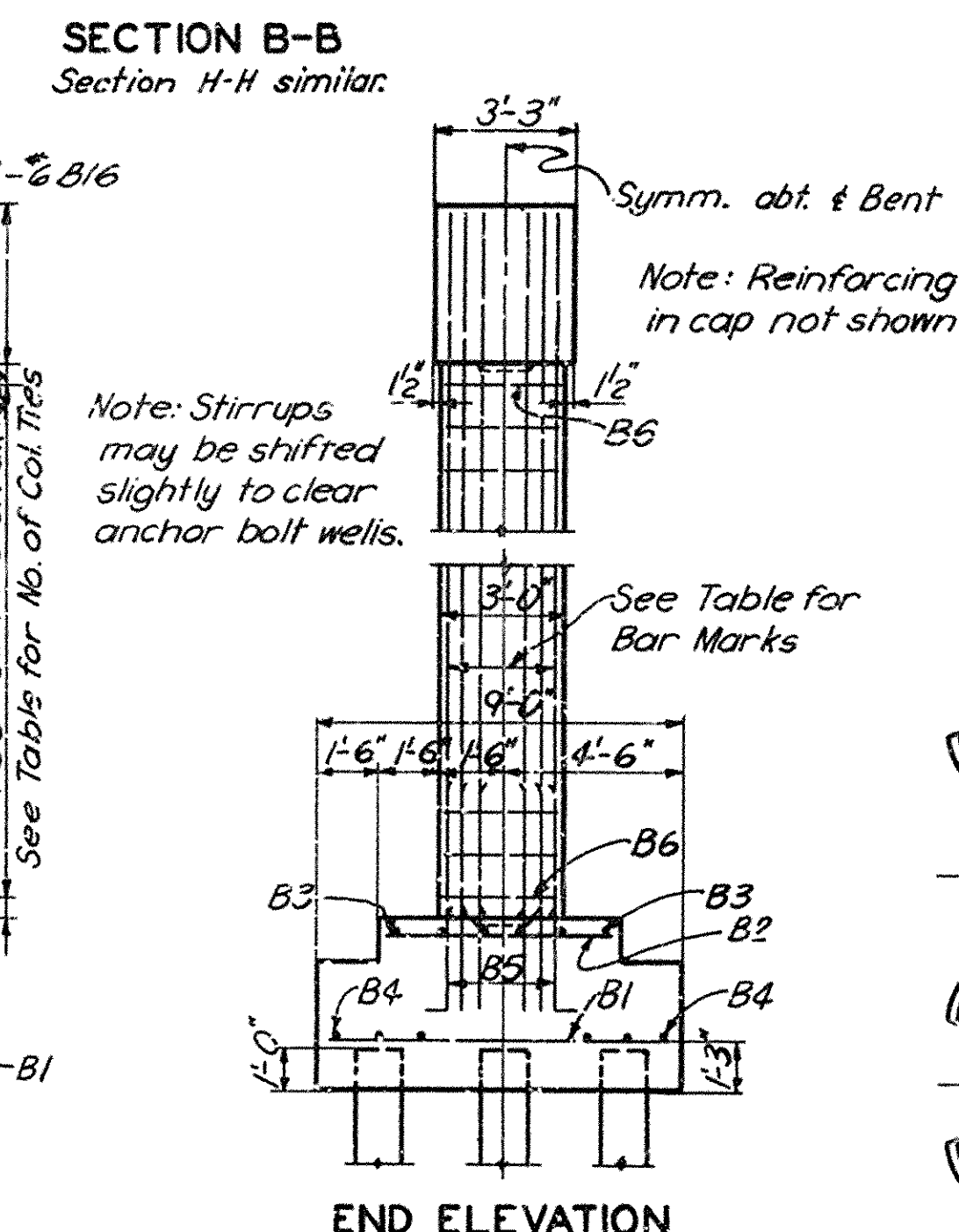
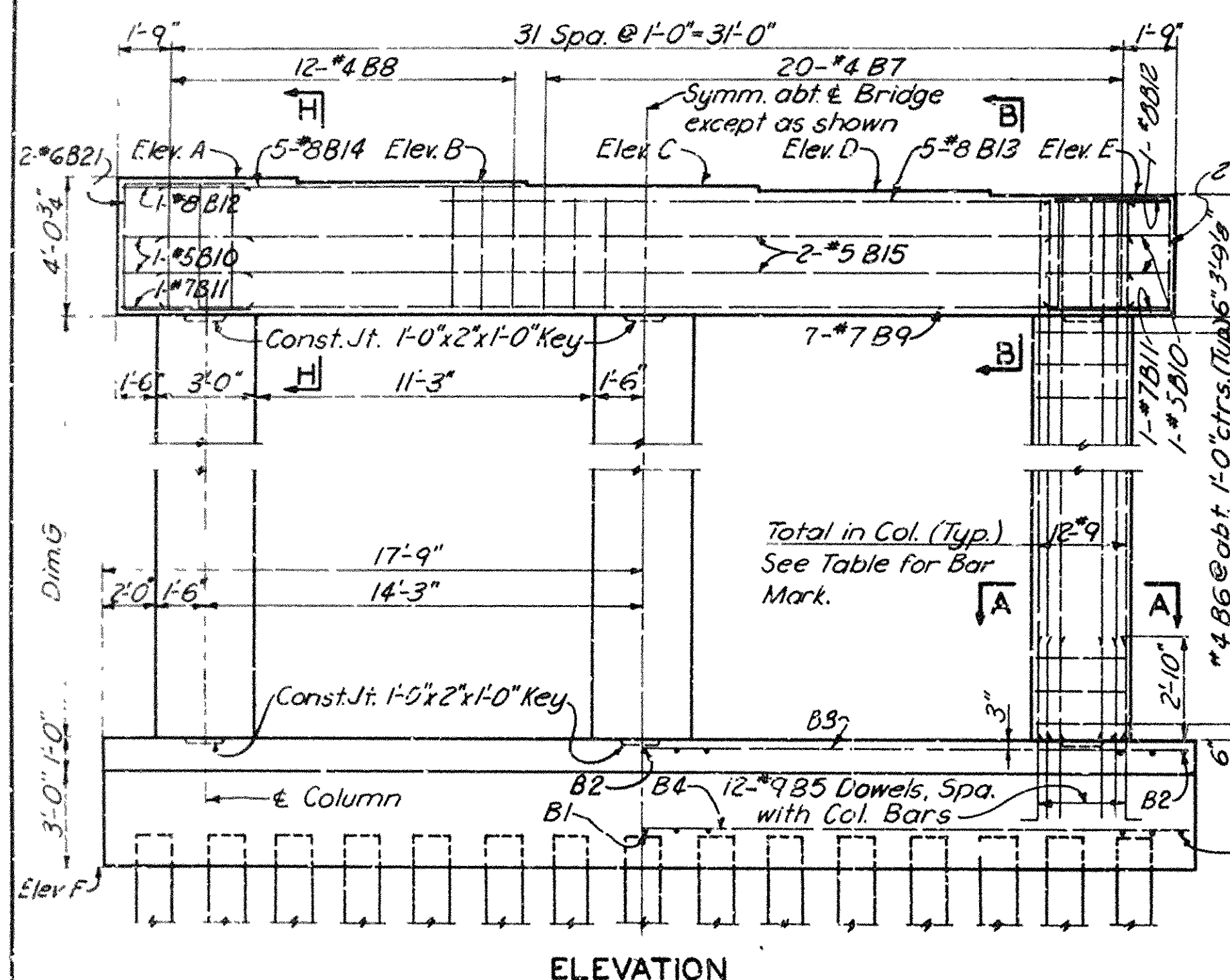
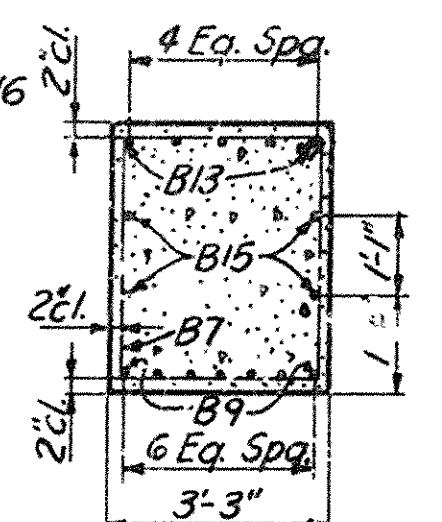
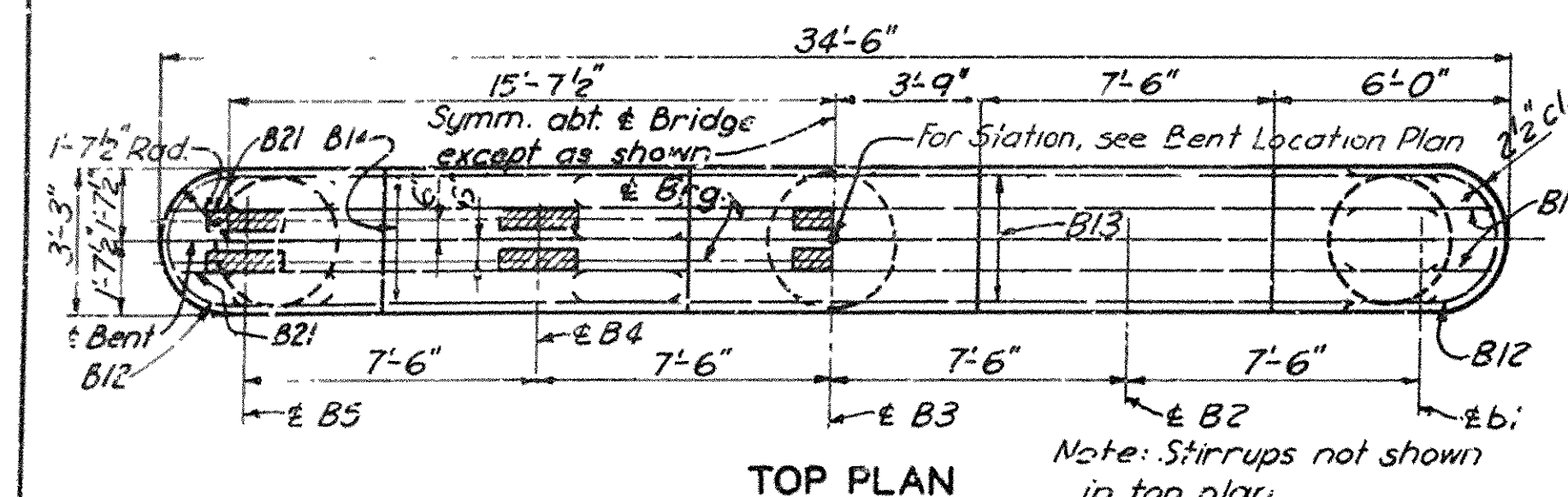
Note: N indicates Northbound Bridge.  
S indicates Southbound Bridge.

TRACED BY R.L.D. DATE NOV. 1957  
CHECKED BY L.H.G. DATE NOV. 1957 SHEET 3 OF 13

BRIDGE NO. 3163A & B DR. WING NO. 10193

SVERDRUP & PARCEL INC  
ENGINEERS ARCHITECTS  
ST LOUIS MO



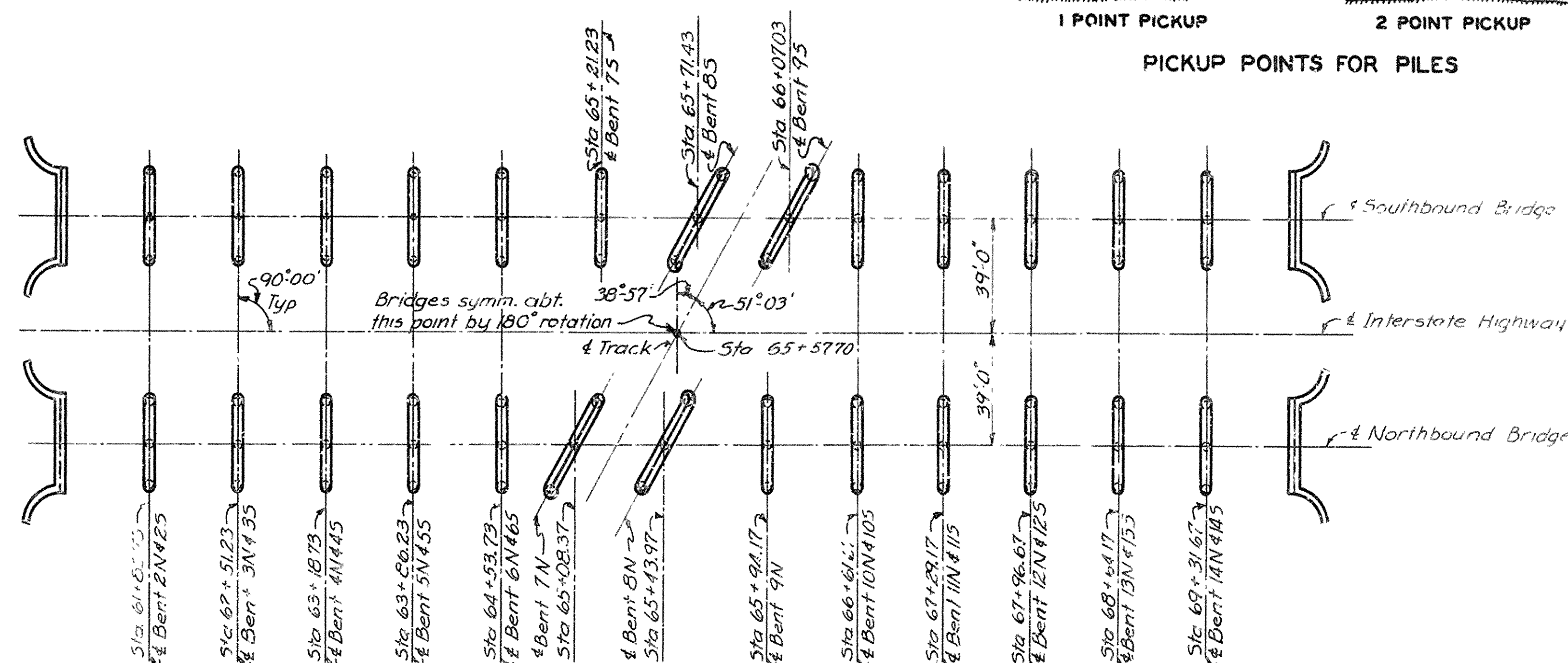
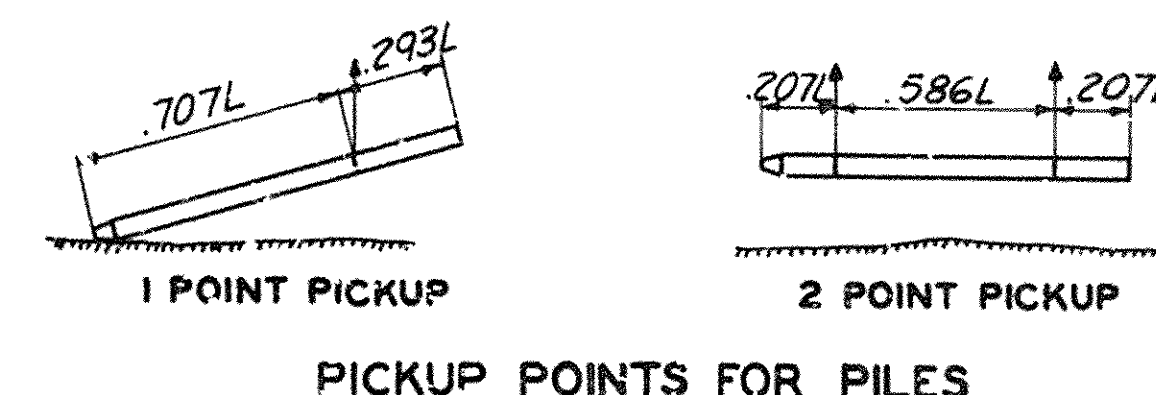
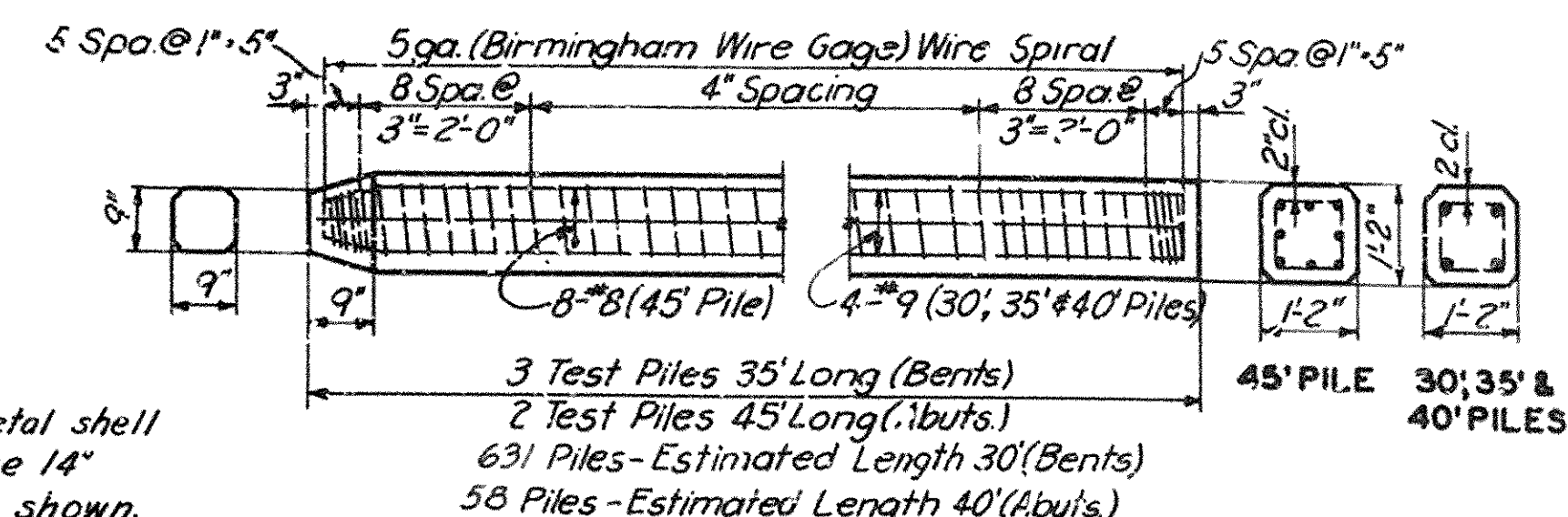


**PILE NOTE**

All bents have 23 piles each @ 30' except as follows:  
 Bent 7N, 8S & 9S have 32 piles each @ 30'  
 Bent 8N has 31 piles @ 30' and 1 test pile @ 35'  
 Bents 4S & 12S have 22 piles each @ 30' and 1 test pile each @ 35'  
 These are estimated lengths and are based on 14" square precast reinforced concrete piles.

Note: 16" nominal diameter concrete filled metal shell foundation piles may be used in lieu of the 14" square precast reinforced concrete piles shown. See Arkansas State Highway Commission Drawing No. 2381A and the Special Provisions.

14" square precast piles in accordance with Ark. State Hwy Comm. Drawing No. 2382 may also be used in lieu of piles shown.



**BENT NOTES**

Concrete in Bent Caps to be Class S  
 All other concrete in Bents to be Class A  
 Bent details for Northbound Bridge are drawn looking ahead on stationing.  
 Bent details for Southbound Bridge are drawn looking back on stationing.  
 N indicates Northbound Bridge.  
 S indicates Southbound Bridge.  
 Work this sheet with Sheet 5 Drwg No. 10195

BENT	2(N&S) 4145	3(N&S)	4&12(N&S)	5&11(N&S)	6&10(N&S)	7S&9N	13(N&S)	14N
A	273.33	274.26	274.99	275.55	275.92	276.11	274.26	273.33
B	273.36	274.18	274.92	275.47	275.85	276.04	274.18	273.26
C	273.18	274.10	274.84	275.40	275.77	275.96	274.10	273.18
D	273.11	274.03	274.77	275.32	275.70	275.89	274.03	273.11
E	273.03	273.95	274.69	275.25	275.62	275.81	273.95	273.03
F	245.00	245.00	245.00	245.00	245.00	245.00	242.50	242.50
Dimension G	20'-3 1/4"	21'-2 3/8"	21'-11 1/8"	22'-5 3/8"	22'-10 3/8"	23'-0 3/8"	23'-8 3/8"	22'-9 1/4"
No. of Column Ties	20	21	22	23	23	23	24	23
Bar Mark for Col. Bar	B17	B18	B19	B20	B23	B22	B24	B25

BENTS 2 THRU 6(N&S) 7S, 9N & 10 THRU 14(N&S)

SOUTH BLYTHEVILLE FRISCO OVERPASS  
 AT STA. 65+57.70

BENTS 2 THRU 6 N&S, 7S, 9N AND 10 THRU 14 N&S

MISSISSIPPI & CRITTENDEN COUNTIES  
 FAI 55 INTERSTATE HIGHWAY

SECTION X  
 ARKANSAS STATE HIGHWAY COMMISSION  
 LITTLE ROCK, ARK.

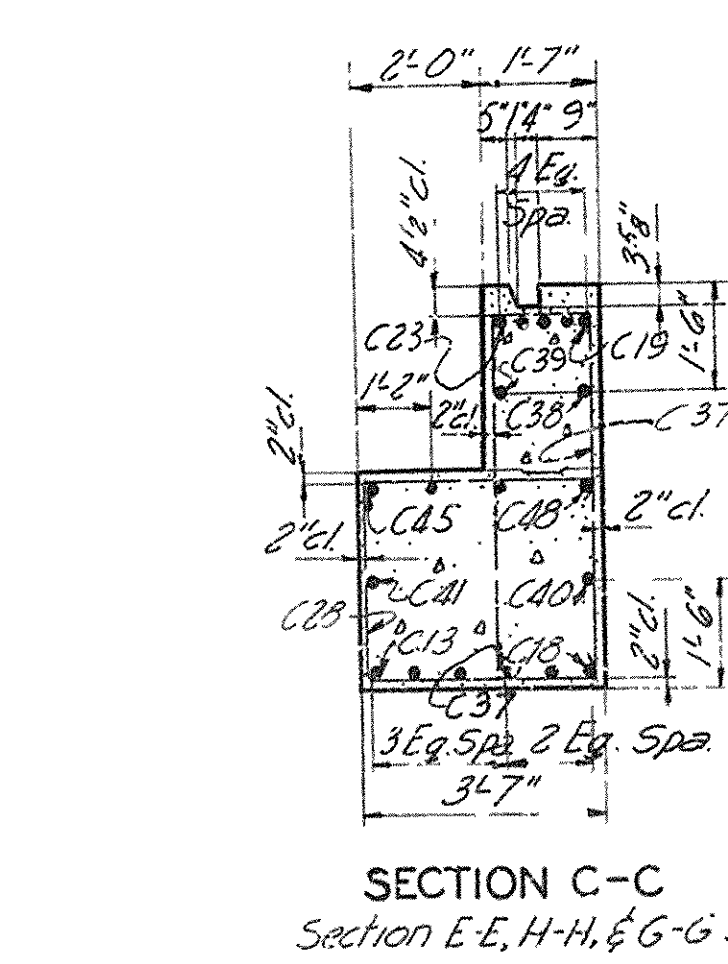
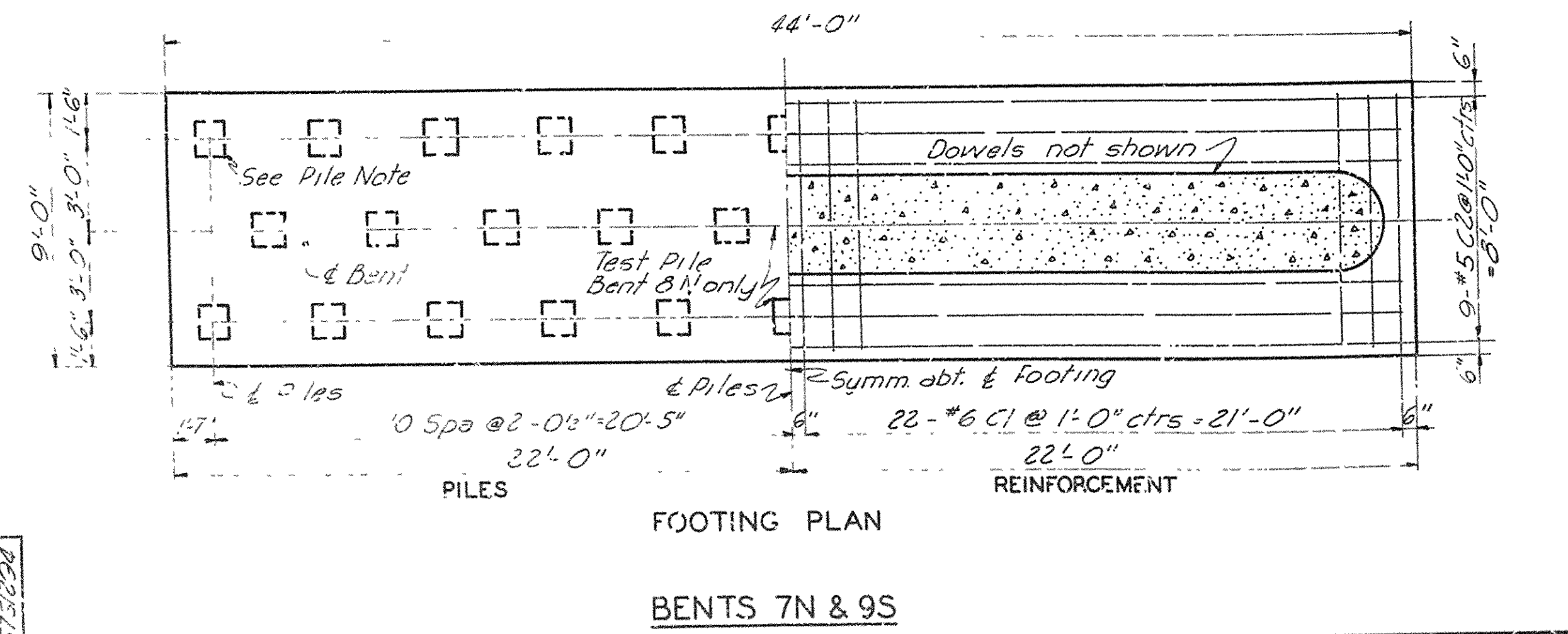
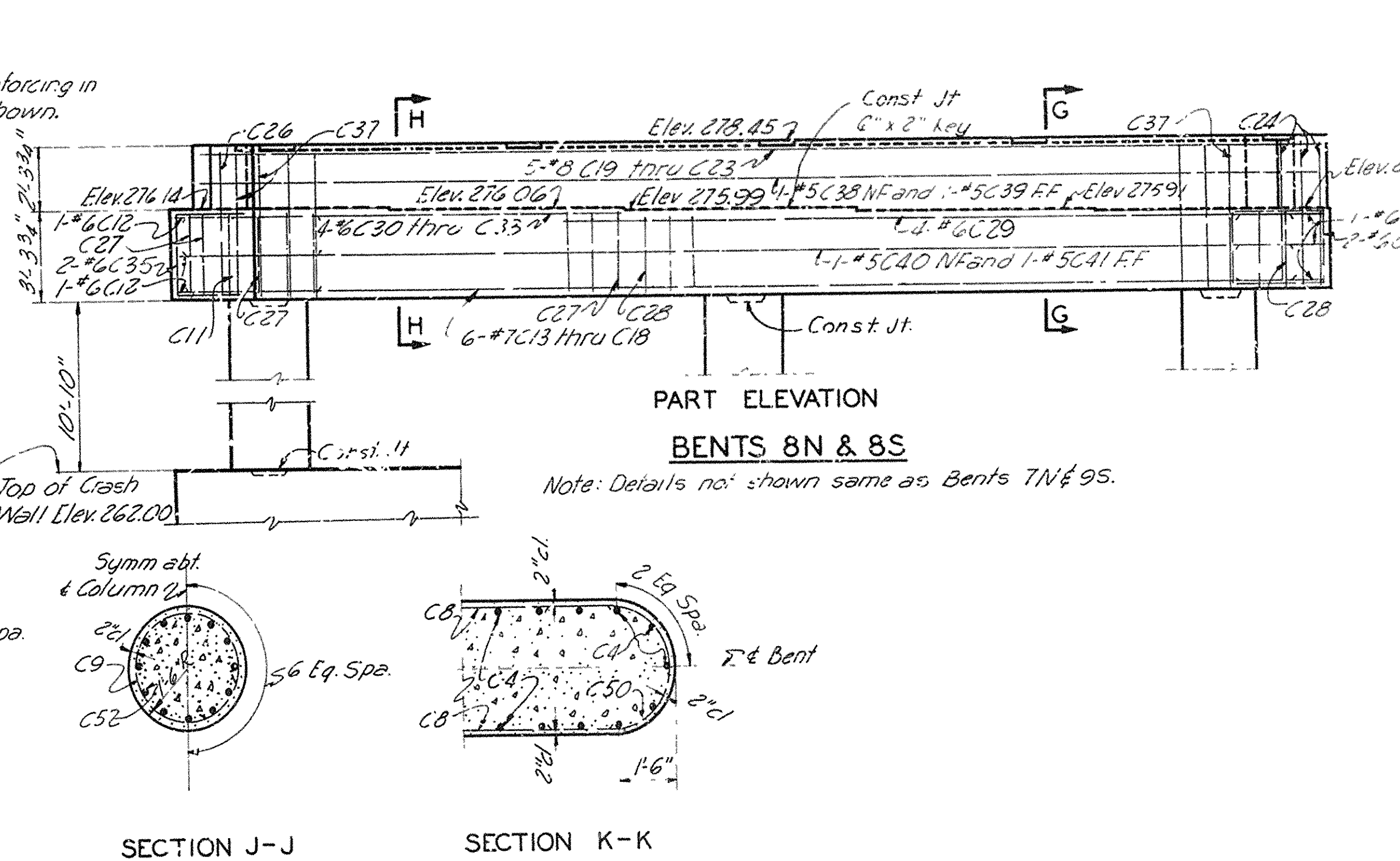
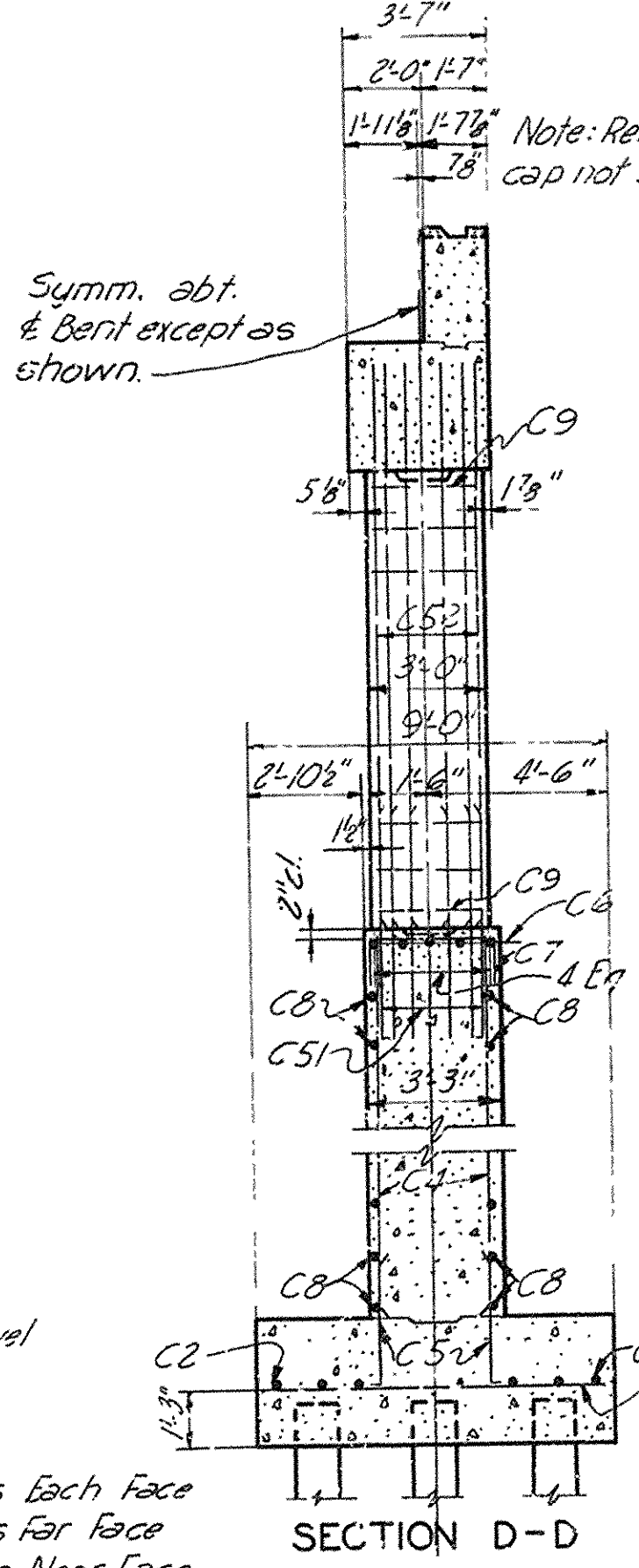
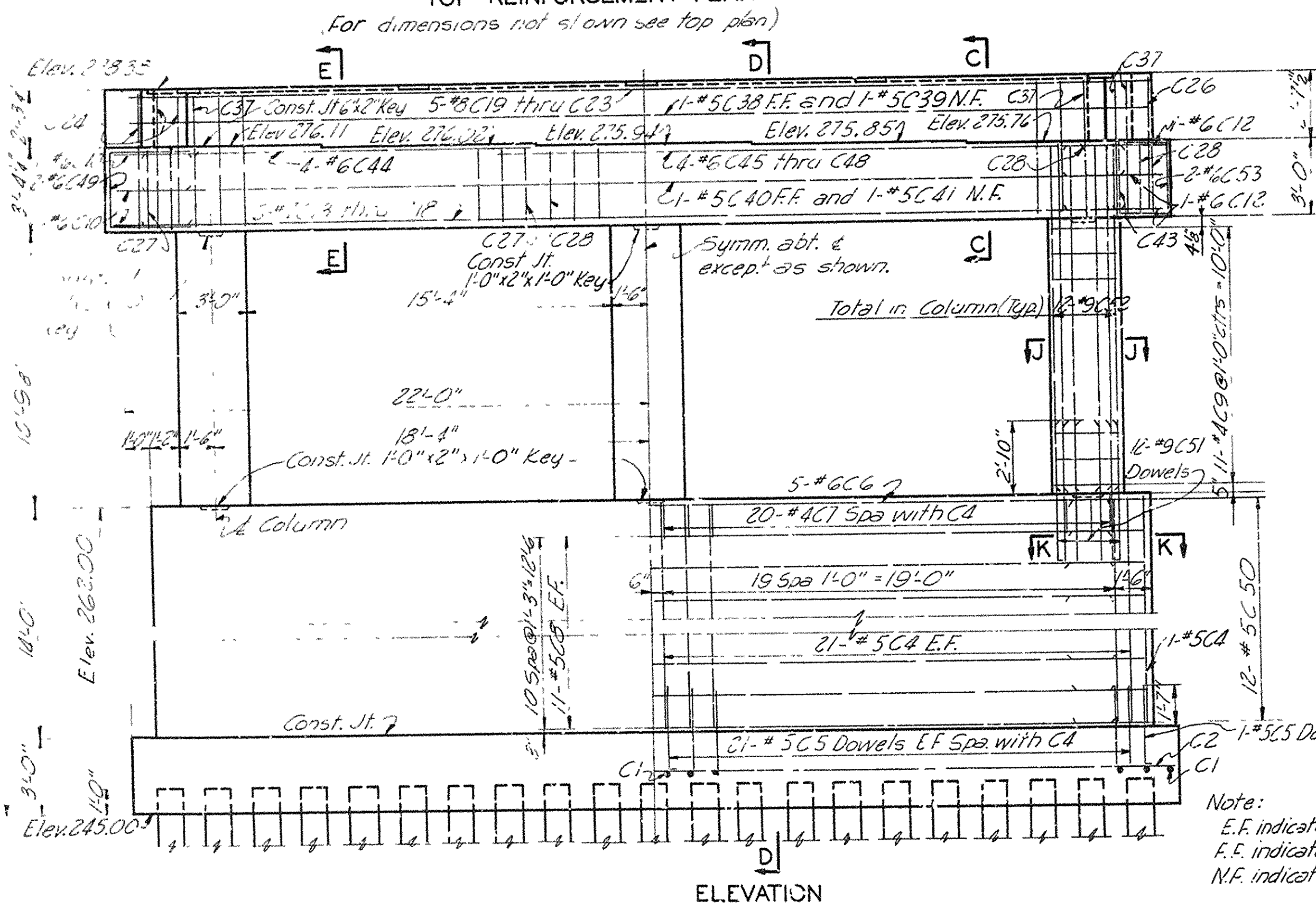
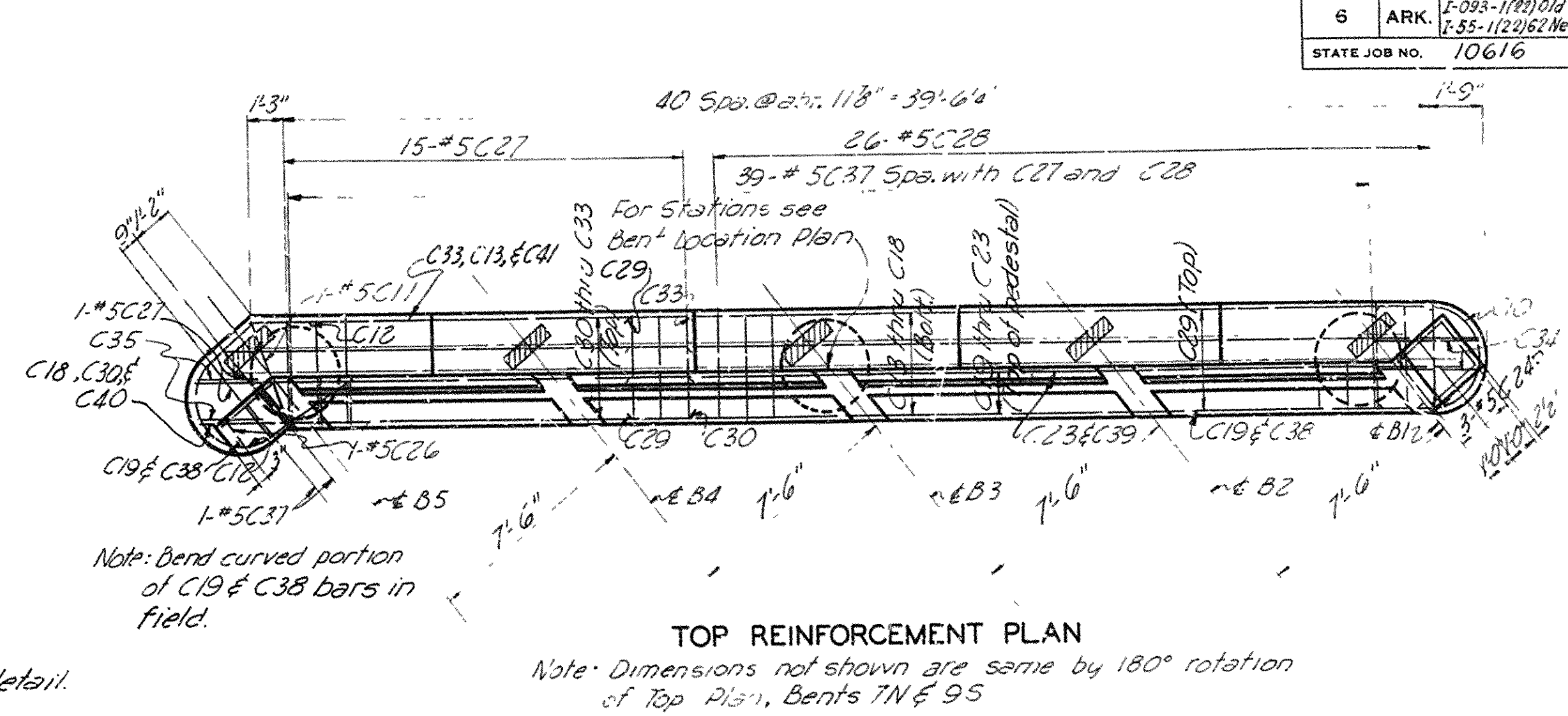
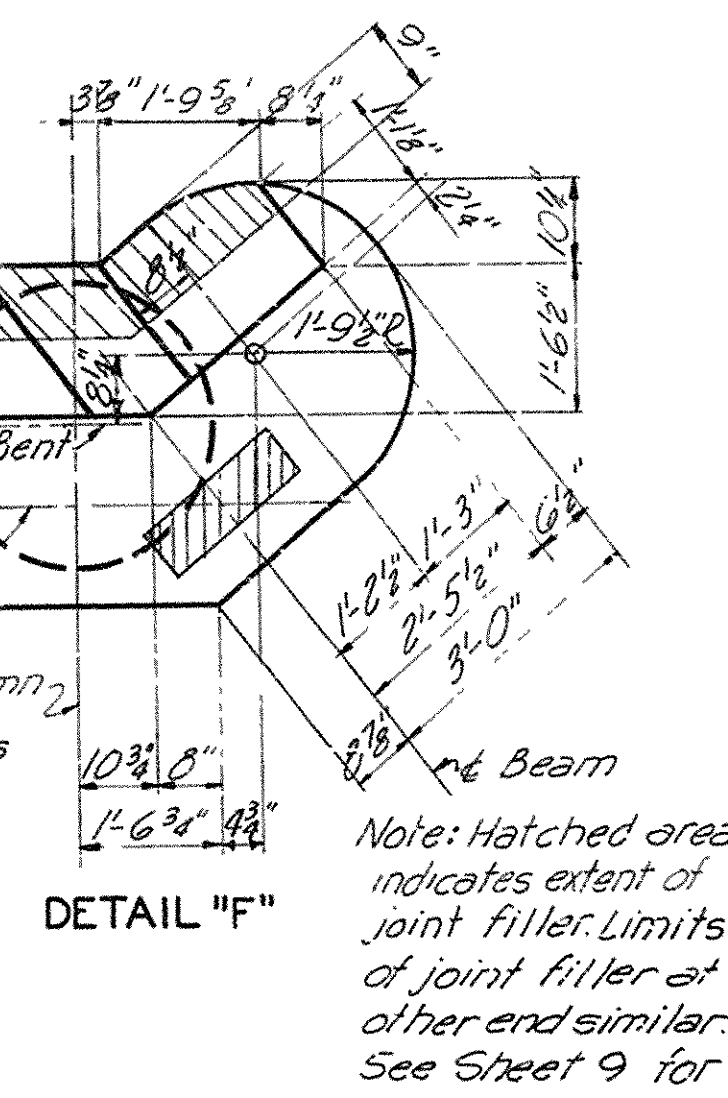
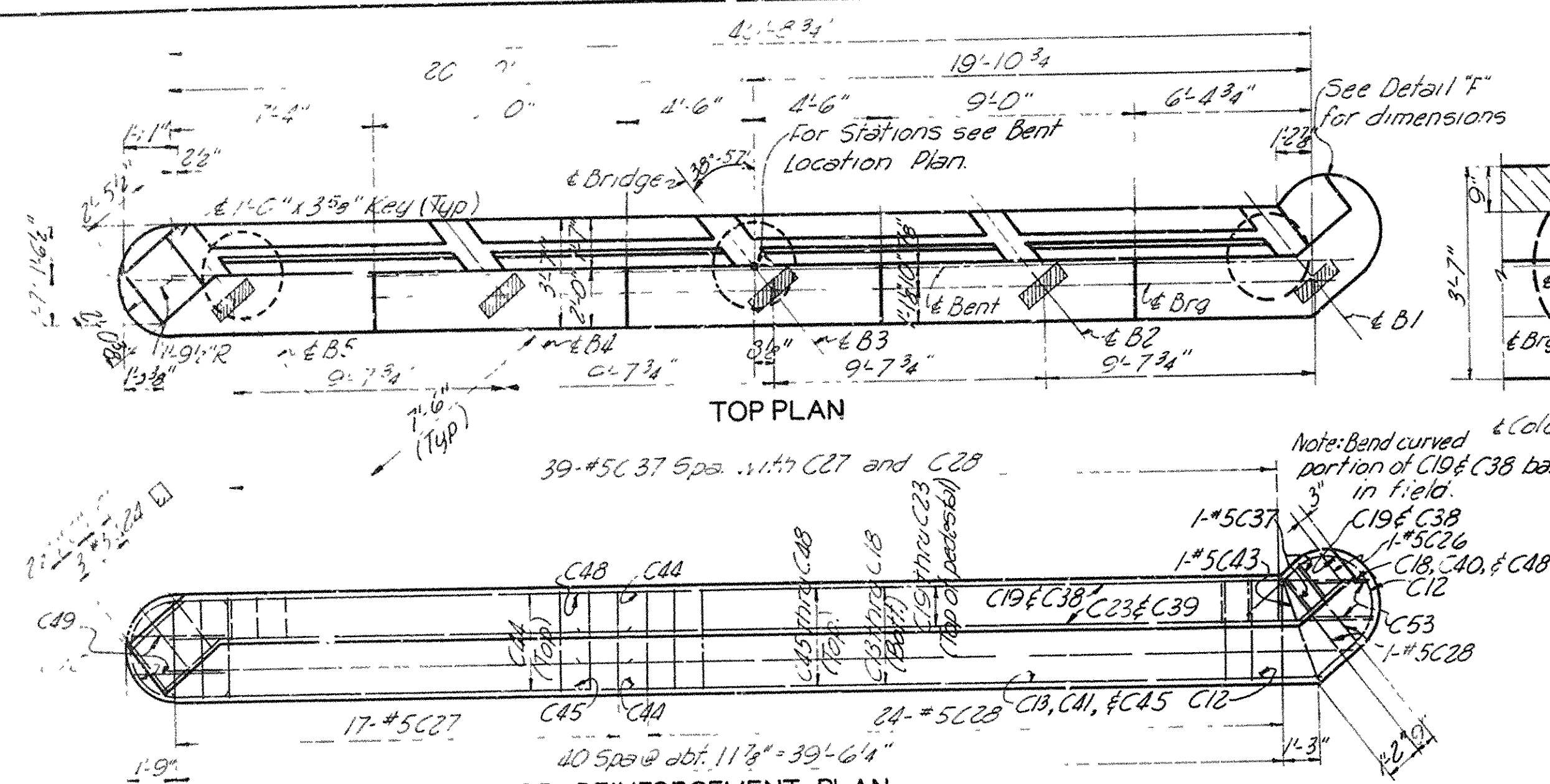
DRAWN BY: K.A. DATE: NOV. 1957 SCALE: NOT TO SCALE  
 CHECKED BY: M.G. Z. DATE: NOV. 1957  
 SHEET 4 OF 13  
 BRIDGE NO. 3163A & B DRAWING NO. 10194

Revised 3-5-59, 14" Concrete Pile Note.

Note: Do not scale this drawing. Follow dimensions.



FED. ROAD DIST. NO.	STATE	PROJECT NO.	FISCAL YEAR	SHEET NO.	TOTAL SHEETS
6	ARK.	F-093-1(19)010 F-55-1(2)062 New		118	347
STATE JOB NO. 10616					



NOTES  
Work this Sheet with Sheet 4 Drwg. No. 10194

SOUTH BLYTHEVILLE FRISCO OVERPASS  
STA. 65+57.70  
BENTS 7N, 8N, 8S, AND 9S  
MISSISSIPPI & CRITTENDEN COUNTIES  
FAI 55 INTERSTATE HIGHWAY  
SECTION I  
ARKANSAS STATE HIGHWAY COMMISSION  
LITTLE ROCK, ARK.  
DRAWN BY: E.A. DATE: NOV. 1957 SCALE: NOT TO SCALE  
TRACED BY: J.F. DATE: NOV. 1957  
CHECKED BY: L.H. DATE: NOV. 1957 SHEET 5 OF 13  
BRIDGE NO. 3163A & B DRAWING NO. 10195

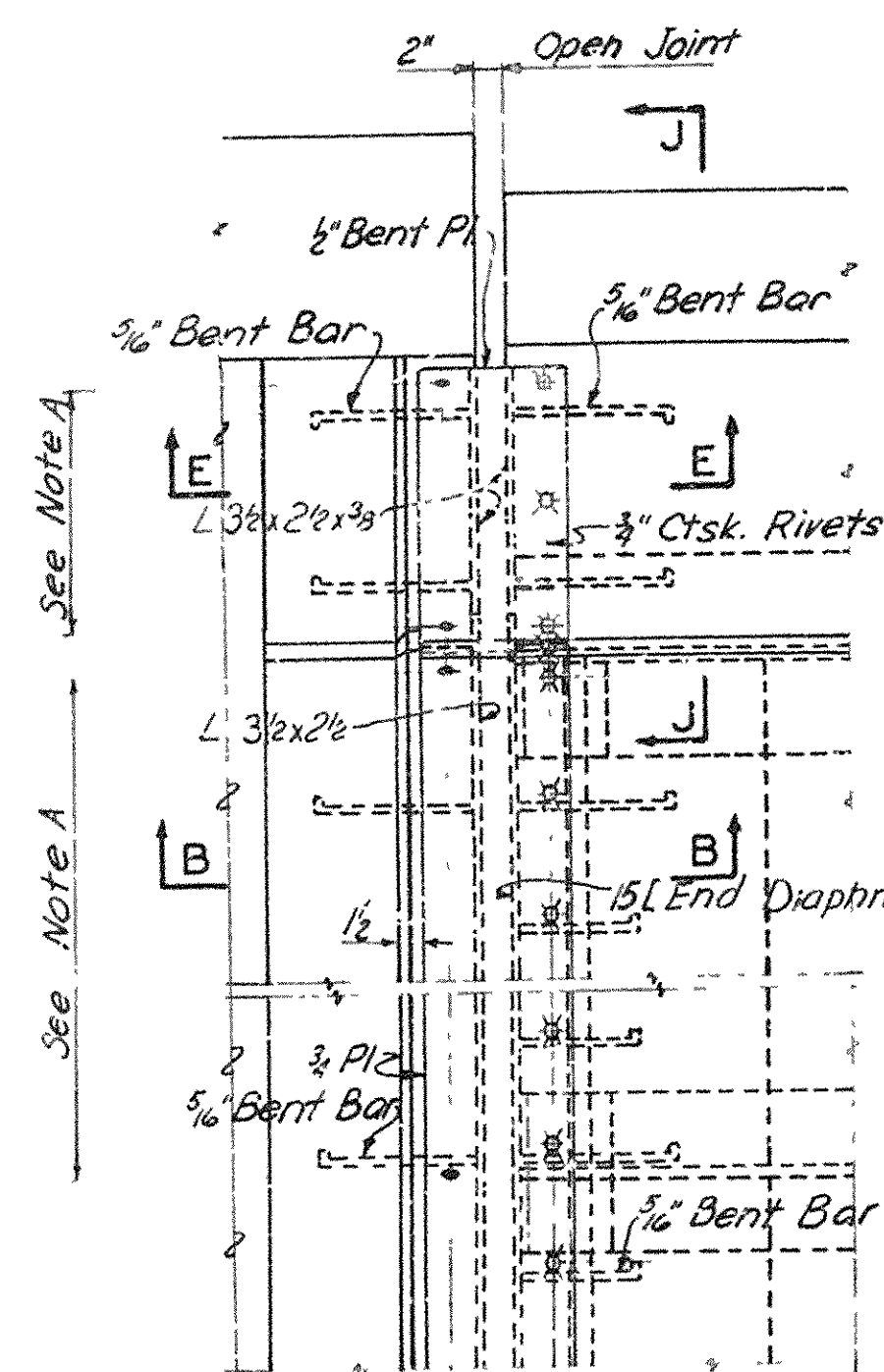
3163-5  
575024



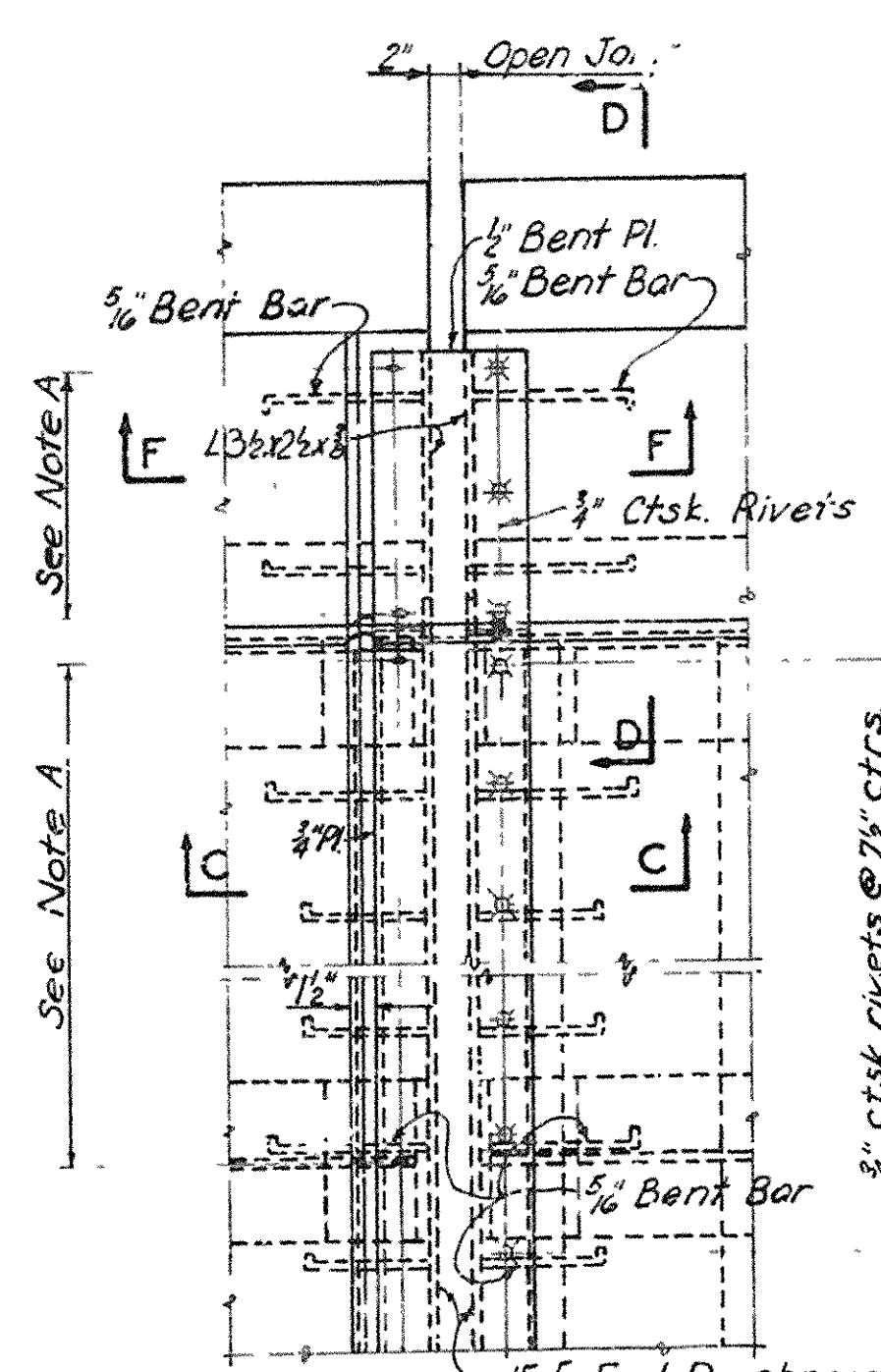




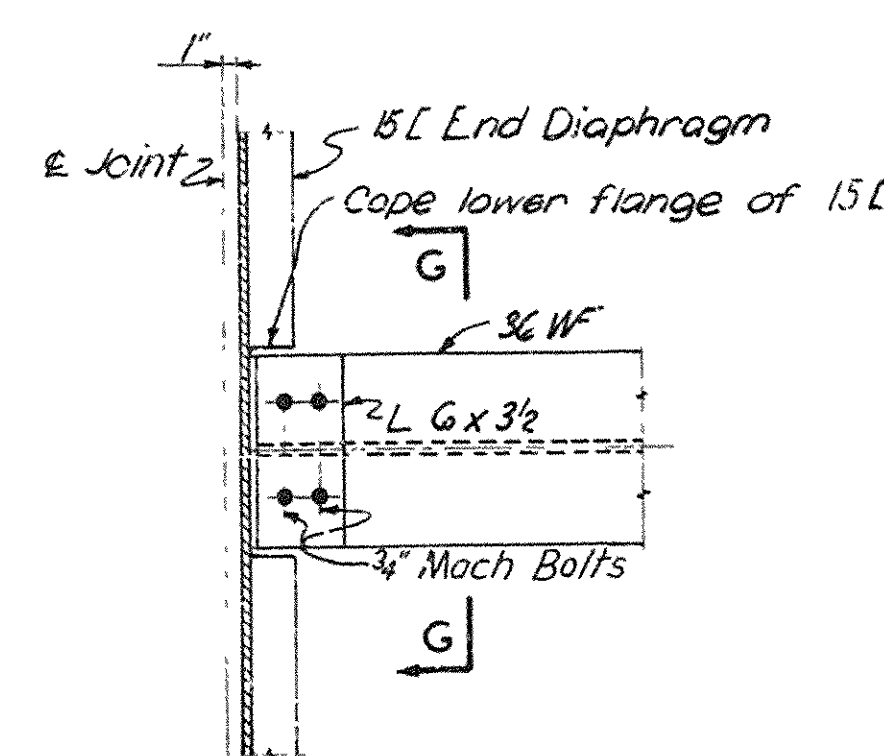
FED. ROAD DIV. NO.	STATE	PROJECT NO.	FISCAL YEAR	SHEET NO.	TOTAL SHEETS
6	ARK.	10616	1957	120	347
STATE JOB NO. 10616					



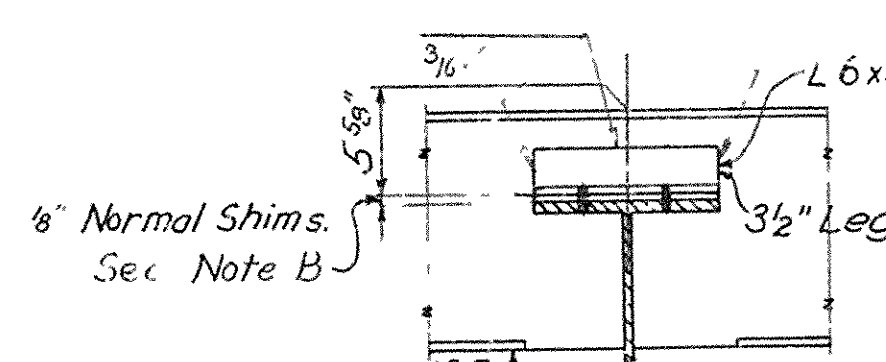
PART PLAN AT ABUTMENTS



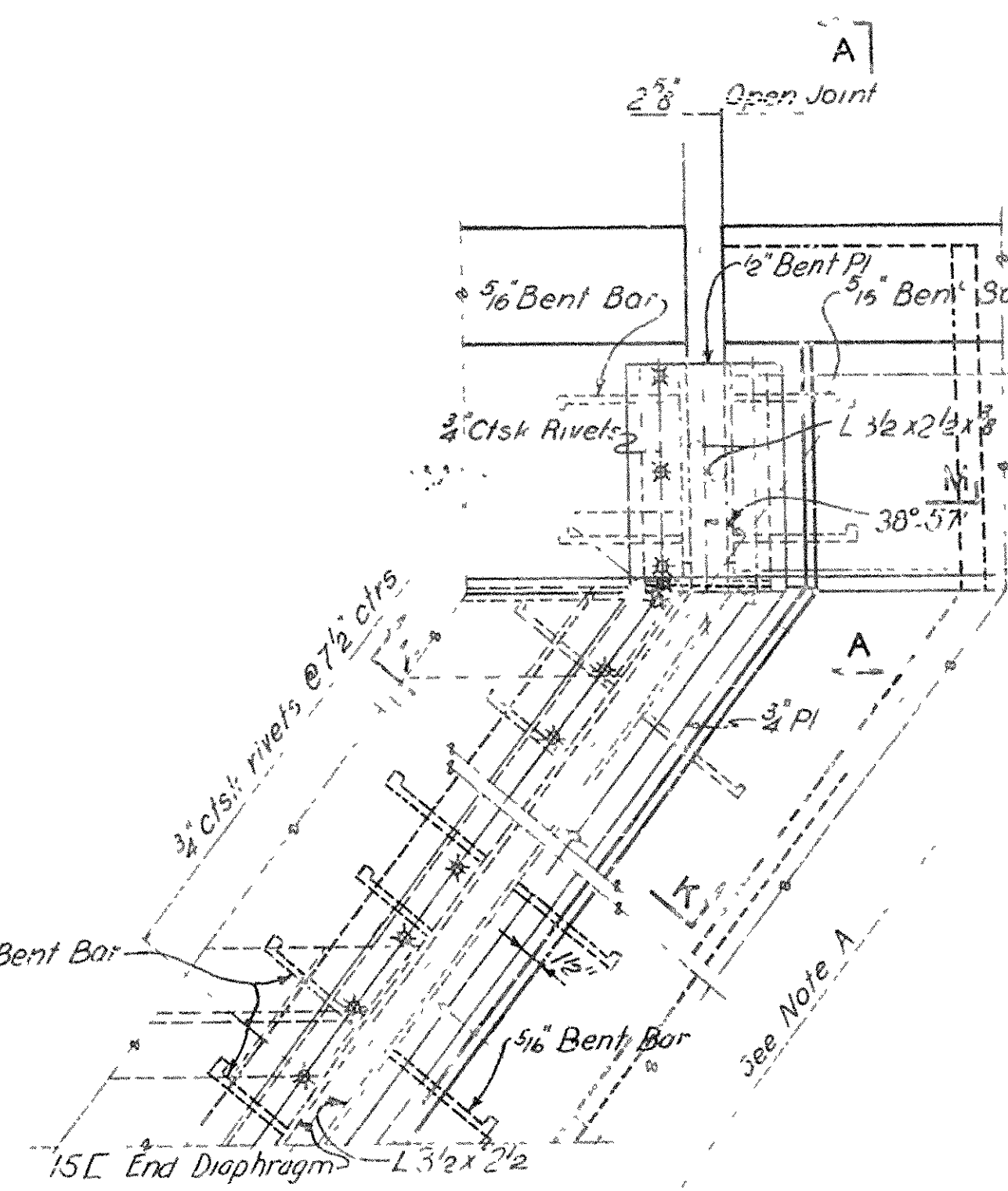
PART PLAN AT BENTS 2 THRU 6 N & S, 7S, 9N, AND 10 THRU 14 N & S



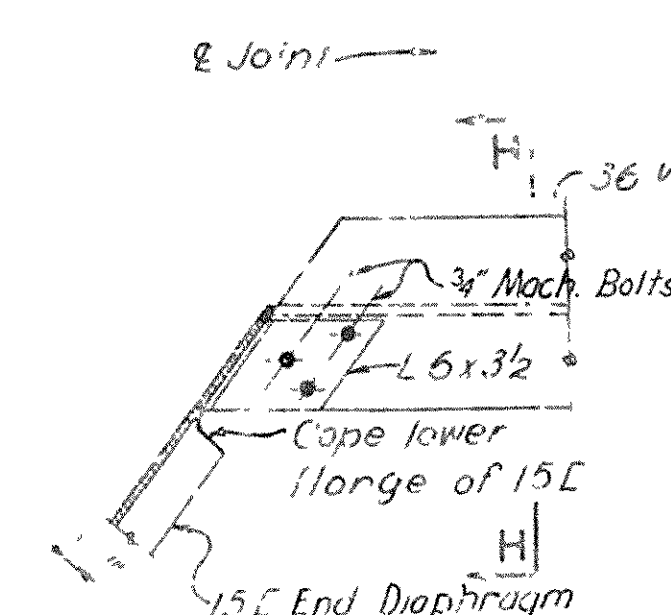
CONNECTION AT INTERIOR BEAMS AT SQUARE BENTS



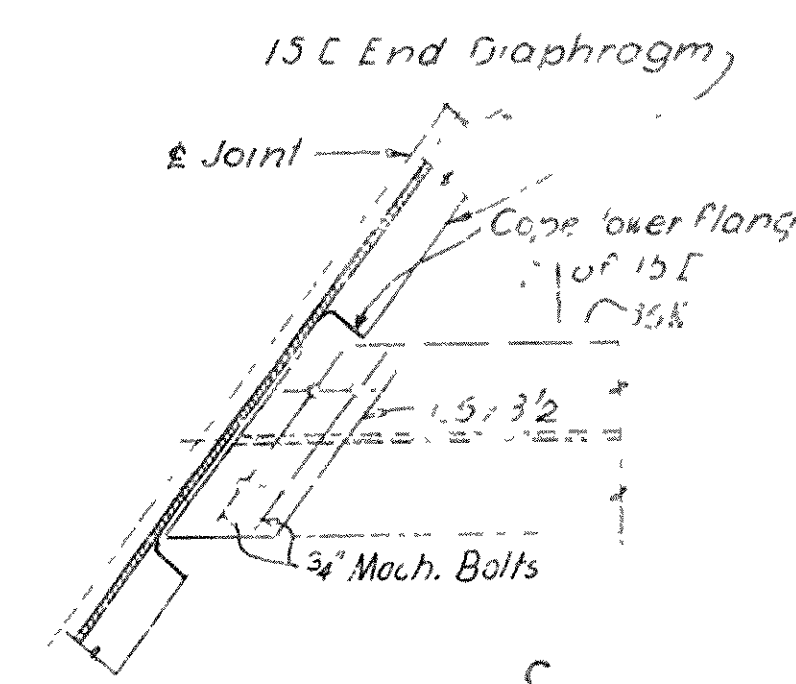
CONNECTION AT EXTERIOR BEAMS AT SQUARE BENTS



PART PLAN AT BENTS 7N 8N & S AND 9S



CONNECTION AT EXTERIOR BEAMS AT SKEWED BENTS



CONNECTION AT INTERIOR BEAMS AT SKEWED BENTS

### STRUCTURAL STEEL NOTES

Holes for  $\frac{3}{4}$ " rivets and  $\frac{3}{4}$ " machine bolts shall be  $\frac{9}{16}$ " and holes for  $\frac{3}{8}$ " high-strength bolts shall be  $\frac{5}{16}$ " unless otherwise noted.  
Roadway expansion devices, shoes, and bearing plates, shall be included for payment in "Structural Steel in Beam Spans."  
Unless otherwise noted, material for structural steel plates and shapes shall conform to ASTM Spec Designation A7 for Structural Carbon Steel.

Steel surfaces in contact with concrete and contact surfaces of all steel parts shall not be painted. All other steel surfaces shall receive one shop coat of red-lead paint before shipment, one field coat of white lead paint tinted with lamp-black and a finish coat of aluminum paint.

Fabric pads at bearings shall be similar and equal to Fabreka as manufactured by Fabreka Products Co., Inc. Payment for fabric pads and rubber washers shall be considered included in unit prices bid for other items.

Connections for intermediate diaphragms to beam connection plates shall be made with  $\frac{3}{8}$ " high-strength bolts. Each bolt shall be furnished with two hardened washers and one heavy hex nut. See Special Provisions.

Where  $\frac{3}{4}$ " machine bolts are shown on the plans, each bolt shall be furnished with one std. hex nut and one std. plate washer.

Roadway expansion device material shall be bent to conform to shape of top of slab.

SOUTH BLYTHEVILLE FRISCO OVERPASS  
AT STA. 55+57.70

### STEEL DETAILS

MISSISSIPPI & CRITTENDEN COUNTIES

FAI 55 INTERSTATE HIGHWAY

### SECTION V

ARKANSAS STATE HIGHWAY COMMISSION

LITTLE ROCK, ARK.

DRAWN BY DATE 1957 SCALE NOT TO SCALE

TRACED BY F.P.N. DATE AUG. 1957

CHECKED BY H.G. DATE NOV. 1957 SHEET 7 OF 13

BRIDGE NO. 3163A&B

DRAWING NO. 10197

SVERDRUP & PARCEL, INC.  
ENGINEERS-ARCHITECTS  
ST. LOUIS, MO.

Note Expansion Device and Open Jt. dimensions shown are at 60°F

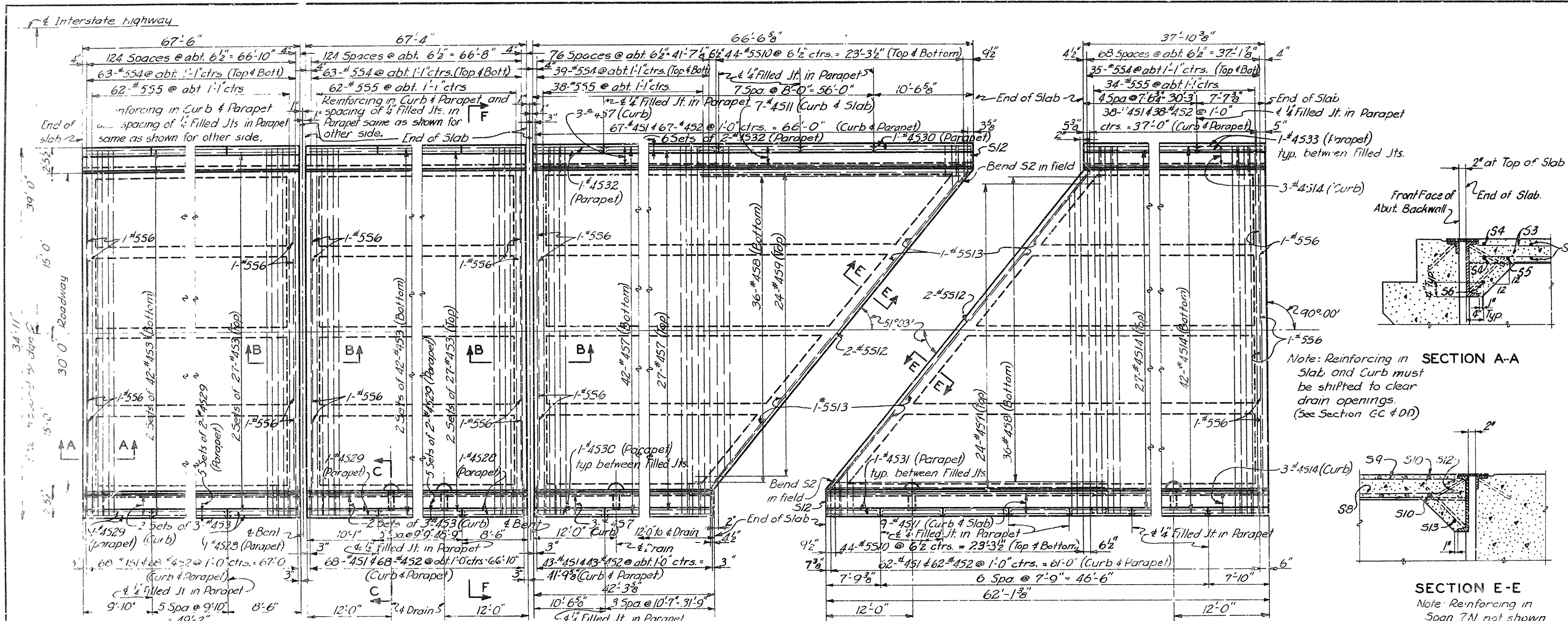
Note A:  $1\frac{1}{2}$ " x  $1\frac{1}{8}$ " slots in top pl. Tap angle or channel for  $\frac{5}{8}$ " cap screws @ abt. 2'-0" ctrs. Remove screws after construction is completed.  
Note B: 6" Normal Shims provided  $\frac{1}{4}$ " of shims with 2' 10" pls & 1' 8" pl.

### ROADWAY EXPANSION DEVICES

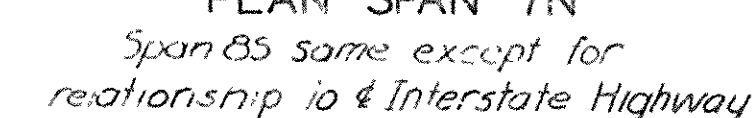
Note: Do not scale this drawing. Follow dimensions



FED. ROAD DIV. NO.	STATE	PROJECT NO.	FISCAL YEAR	SHEET NO.	TOTAL SHEETS
6	ARK.	1093-1122 Old 1093-1122 New		121	347
STATE JOB NO. 10616					





66

Note: All longitudinal dimensions are in a horizontal plane.



The slab span shall be constructed with above camber. Ordinates include dead load deflection and vertical curve.

NOTES  
Parapets are to be poured after  
slab falsework has been removed.  
N indicates Northbound Bridge  
S indicates Southbound Bridge  
See Notes on Sheet 8 concerning pre-moulded  
joint filler. Drawg. No. 10198



MISSISSIPPI & CRITTENDEN COUNTIES  
FAI 55 INTERSTATE HIGHWAY  
SECTION V

DATE BY G.C. DATE SEPT. 1957 SCALE NOT TO SCALE  
CHECKED BY MCZ DATE 1957  
DATE BY C DATE NOV 1957 SHEET 1 OF 12

BRIDGE NO. 31634 &amp; B DRAWING NO. 10199

SVERDRUP & PARCEL INC  
ENGINEERS ARCHITECTS  
ST LOUIS MO

Note Do not scale this drawing Follow dimensions



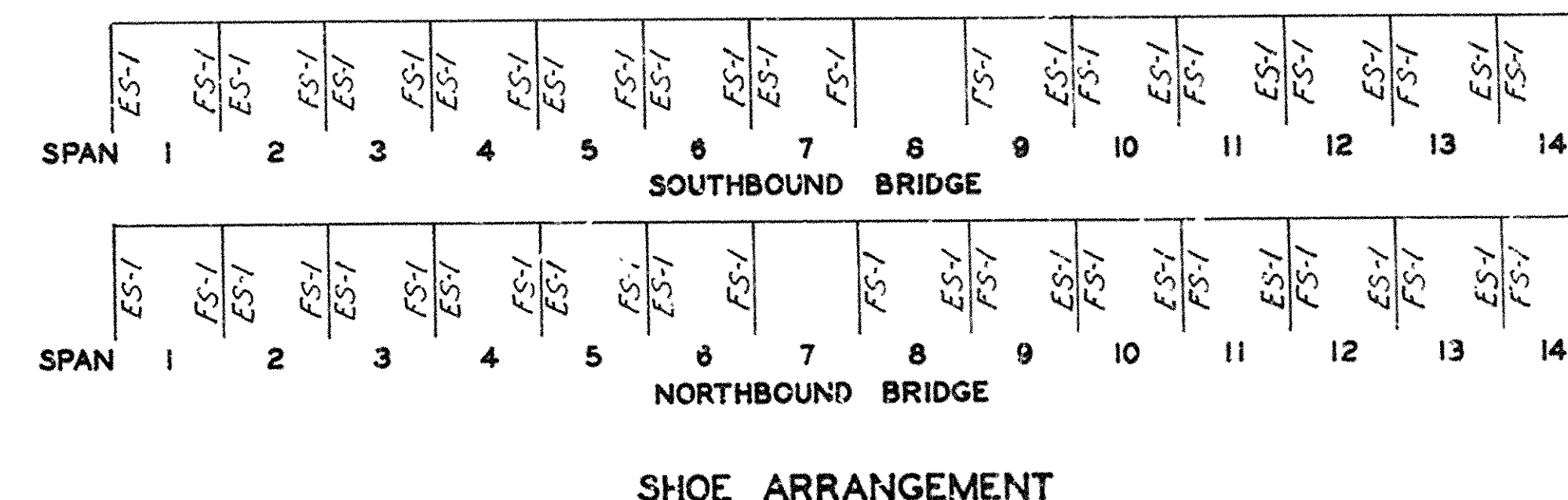


Diagram illustrating the dimensions and required stitches for a shoe sole:

- Top layer: 24" thrd. 100 S wedged
- Bottom layer: 14" Dia. 1'-6" 260 Required (Shoes ES-1)
- Bottom layer: 14" Dia. 1'-4" 260 Required (Shoes FS-1)

See Shoe Details for required nuts,  
plate washers & rubber washers.

*Fabric pads shall be similar and equal to Fabreeka as manufactured by the Fabreeka Products Co., Inc. and shall be cut to the exact size and shape of the post base with no overlap. Payment for fabric pads shall be considered included in unit price bid for other items.*

See Sheet 7 for Structural Steel Notes. Drwg. No 10197

## BRIDGE NO. 3163A &amp; B DRAWING NO. 10200



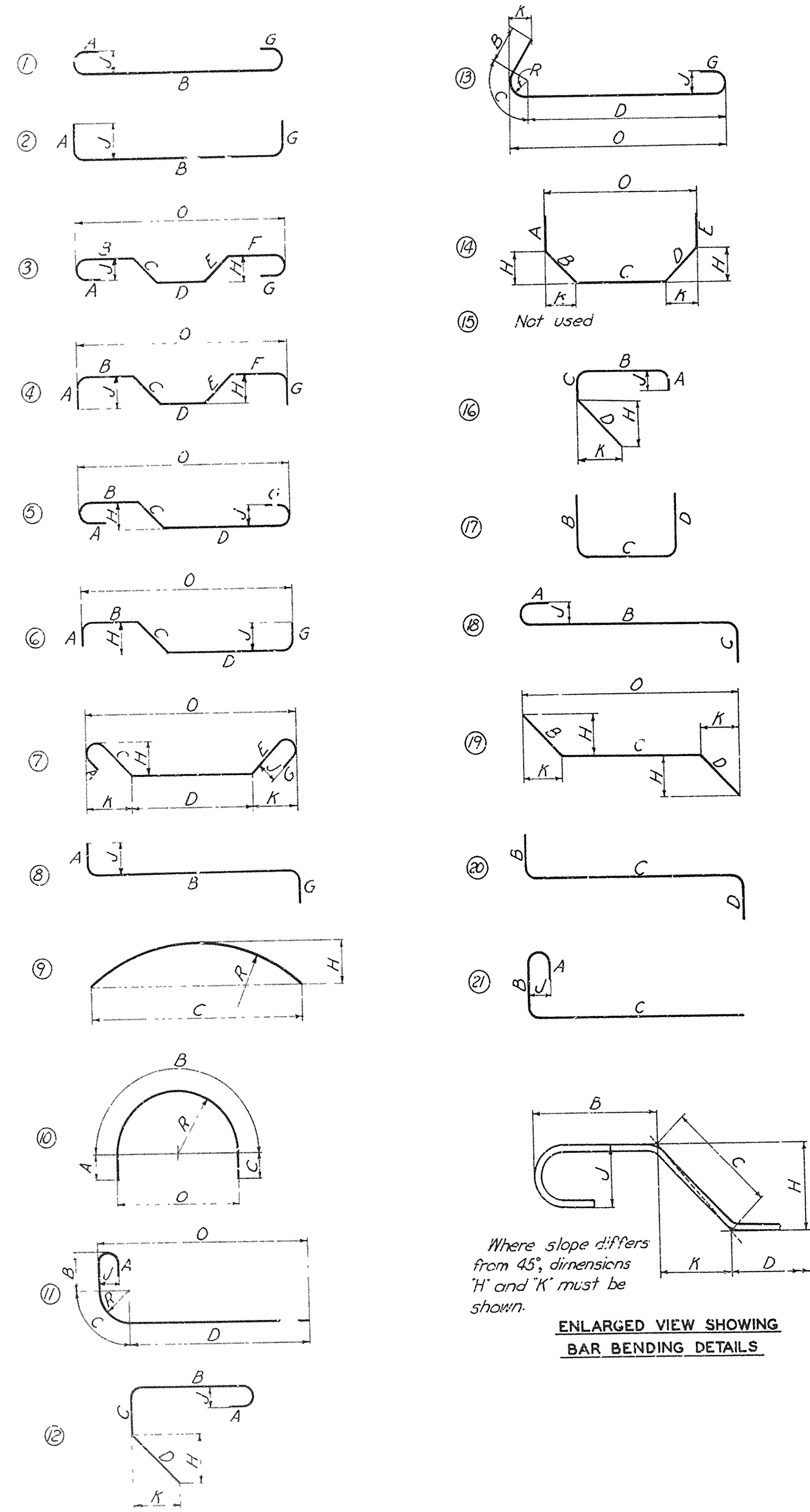


1343-5	5751396
--------	---------



FED. ROAD DIV. NO.	STATE	PROJECT NO.	FISCAL YEAR	SHEET NO.	TOTAL SHEETS
6	ARK	F-093-1(22) Old F-55-1(22) New		135	347
STATE JOB NO. 10616					

TYPICAL BAR TYPES



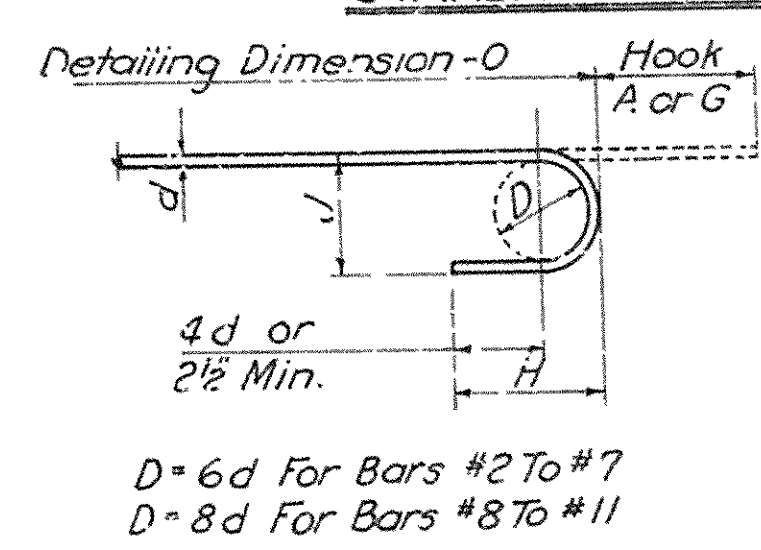
ENLARGED VIEW SHOWING BAR BENDING DETAILS

NOTES

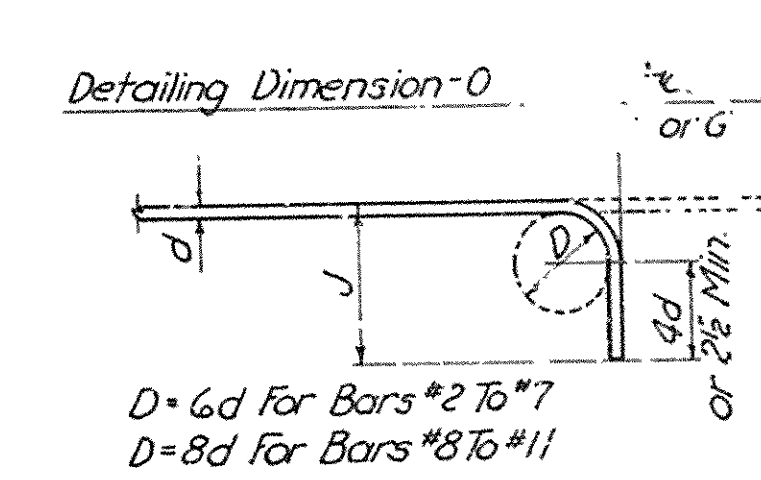
1. All dimensions are out to out, except "R" which is to inside of bend.
2. "J" Dimension on 180° hooks to be shown in Bar List only where necessary to restrict hook size, otherwise standard hooks are to be used.
3. Where "J" is not shown, "J" will be kept equal to or less than "H". Where "J" can exceed "H", it should be shown in Bar List.
4. "H" Dimension on stirrups to be shown in Bar List where necessary to restrict hooks.
5. Corrections in length, due to bending around a mandrel, will be made only when the radius "R" (as in types 11 and 13) exceeds the standard radii indicated in standard hook dimensions. However, the dimensions "A" or "G" shown for standard hooks have been corrected for curvature.
6. All bends shown are bent around a standard mandrel, except where radius "R" is indicated.
7. Figures in circles show bar types.
8. Where "R" is shown on bar types 9, 10, 11 and 13, the length of bend shall be measured along outside of bend. The length of bar type T3 shall also be measured along outside of bar.

$$B, C, D, \text{ or } E = \sqrt{\frac{H^2 + J^2}{2}}$$

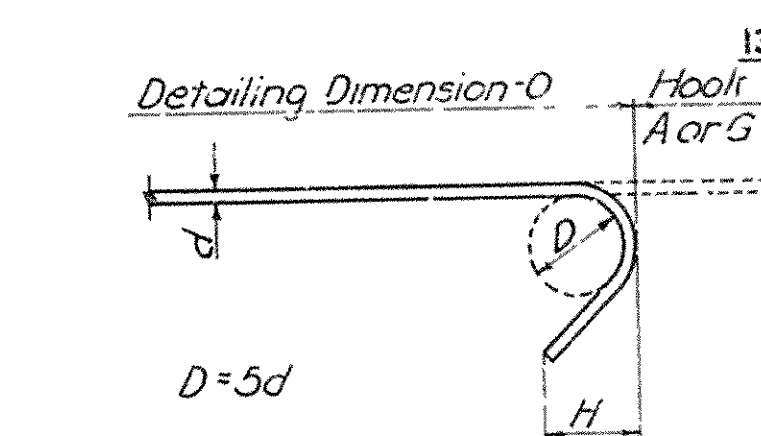
STANDARD HOOK DIMENSIONS



Bar Size	Hook A or G	J	Approx H
#2	4"	2"	3½"
#3	5"	3"	4"
#4	6"	4"	4½"
#5	7"	5"	5"
#6	8"	6"	6"
#7	10"	7"	7"
#8	11"	10"	9"
#9	13"	11½"	10½"
#10	15"	13"	11½"
#11	17"	15"	13"



Bar Size	Hook A or G	J	Approx H
#2	3"	3½"	
#3	3"	4"	
#4	3"	4½"	
#5	4"	5"	
#6	4"	6"	
#7	5"	7"	
#8	6"	9"	
#9	7"	10"	
#10	8"	11½"	
#11	9"	13"	



Bar Size	Hook A or G	J	H
#2	3½"	2"	
#3	4"	2½"	
#4	4½"	2½"	
#5	5"	2½"	

BAR SIZE EQUIVALENTS

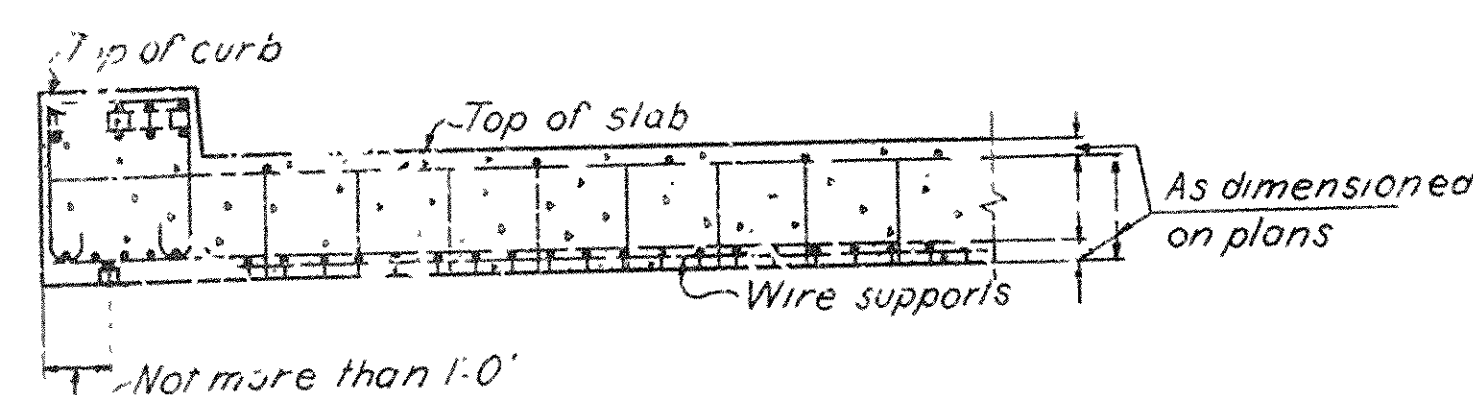
#2	6"	#7	7½"
#3	3½"	#8	1"
#4	15"	#9	1"
#5	5½"	#10	1½"
#6	3"	#11	1½"

EAST BLYTHEVILLE FRISCO OVERPASS  
AT STA. 201+85.30  
TYPICAL BAR TYPES  
AND HOOK DIMENSIONS

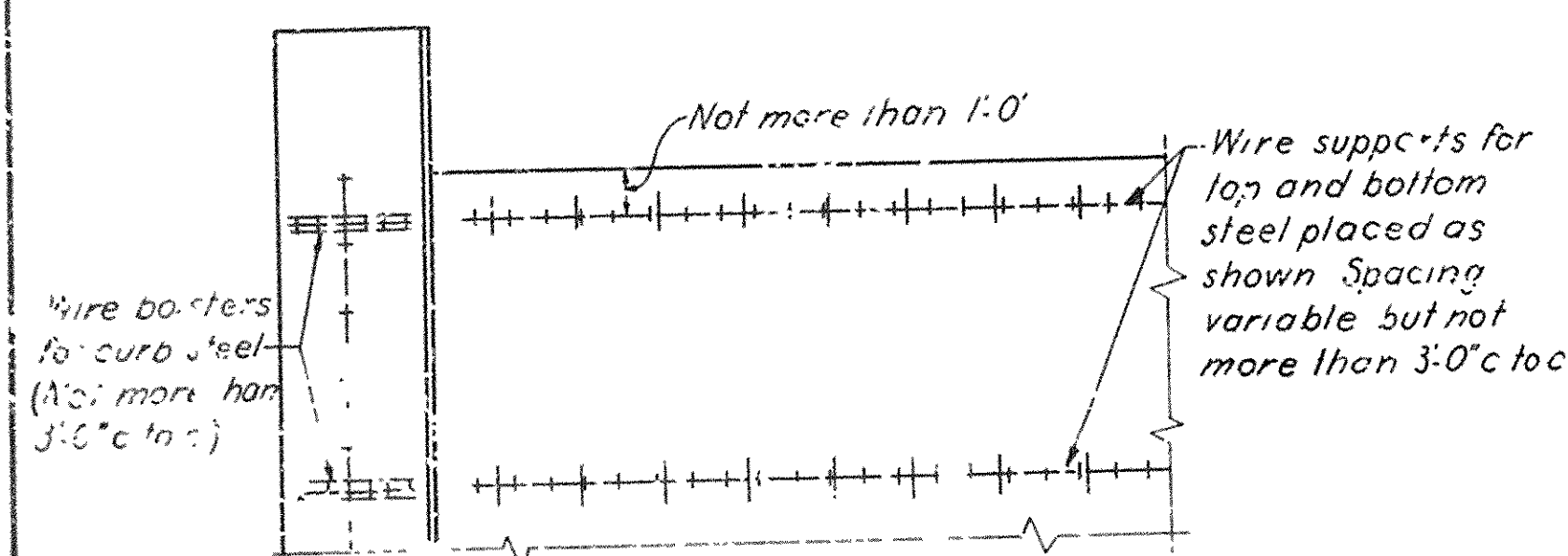
MISSISSIPPI & CRITTENDEN COUNTIES  
FAI 55 INTERSTATE HIGHWAY  
SECTION III  
ARKANSAS STATE HIGHWAY COMMISSION  
LITTLE ROCK, ARK.  
DRAWN BY: F.L.G. DATE: DEC. 1957. SCALE: NOT TO SCALE  
TRACKED BY: F.L.G. DATE: DEC. 1957.  
CHECKED BY: L.H.G. DATE: DEC. 1957. SHEET 11 OF 12  
BRIDGE NO. 3162 A & B, 3166 A & B  
DRAWING NO. 10212

1343-5  
5251467

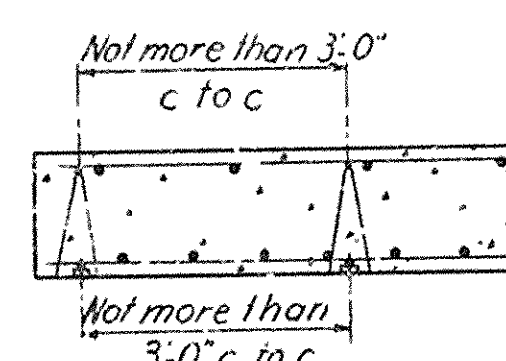




PART SECTION

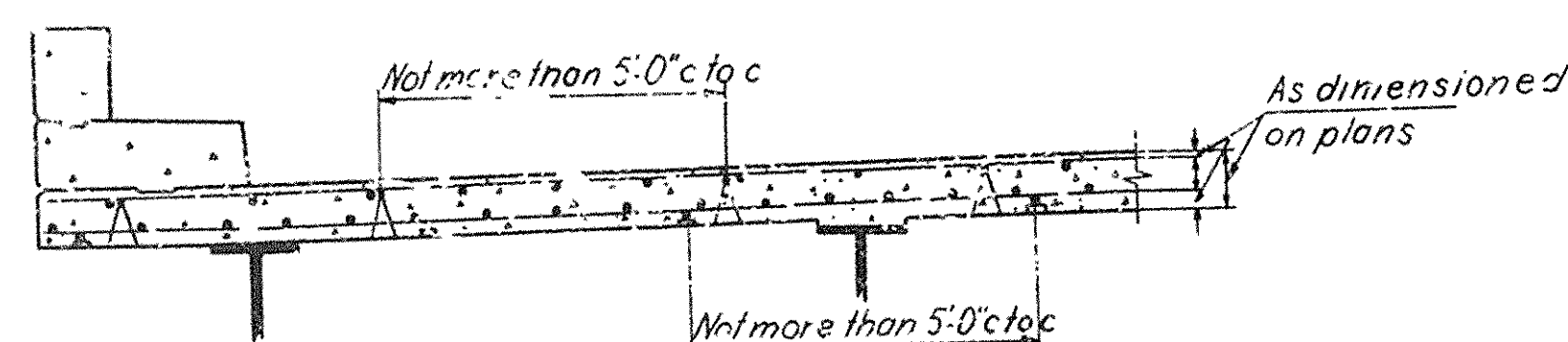


PART PLAN

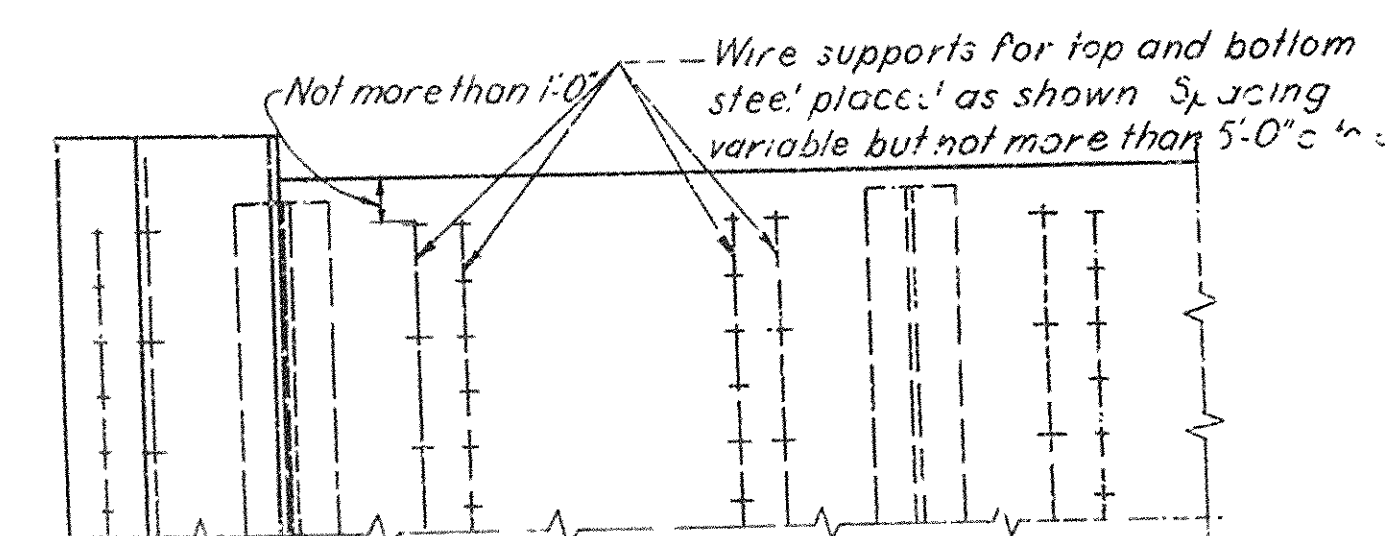


PART LONGITUDINAL SECTION

TYPICAL SLAB SPANS



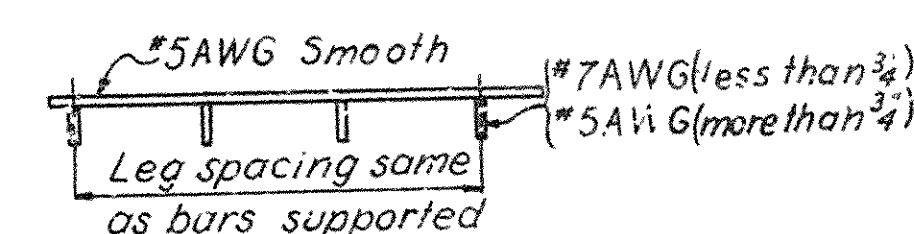
PART SECTION



PART PLAN

PART LONGITUDINAL SECTION

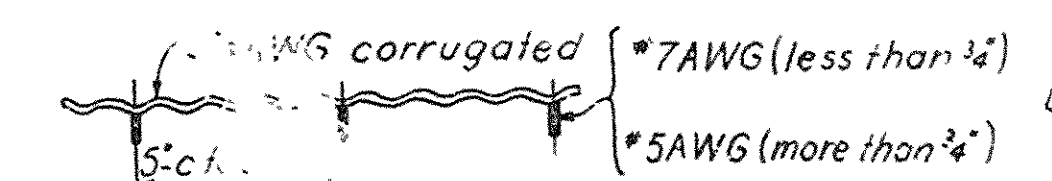
TYPICAL I-BEAM SPANS



ELEVATION

SECTION

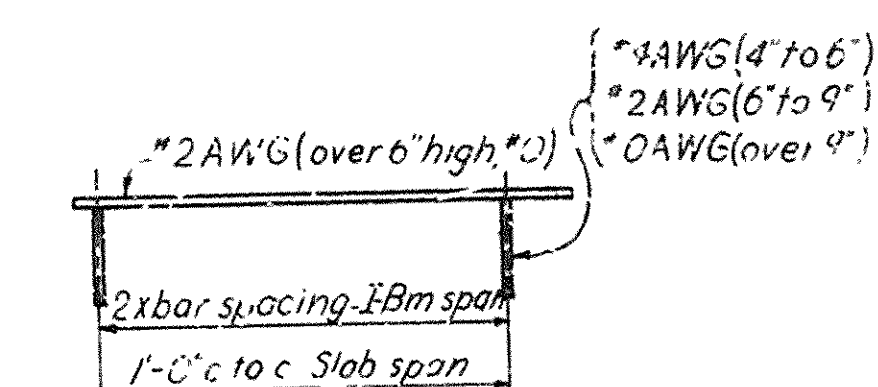
SLAB SPACER



ELEVATION

SECTION

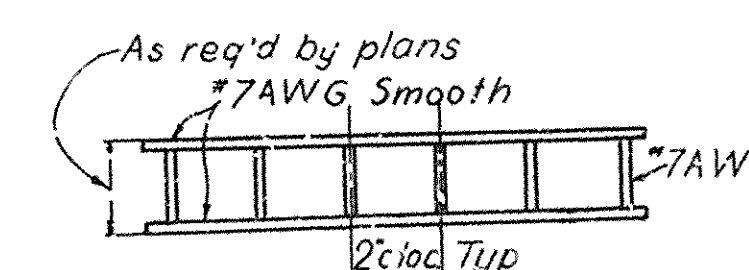
SLAB BOLSTER



ELEVATION

SECTION

CONTINUOUS HIGH CHAIR



ELEVATION

SECTION

BEAM BOLSTER UPPER

# NOTES

All reinforcing steel shall be accurately located in the forms and firmly held in place by means of steel wire supports, heights of which shall be sufficient to support bars in the exact positions dimensioned on plans. Spacing of wire supports shall be approximately as given on this sheet.

Details of wire supports shown are typical and supports of other design may be used, however, shop drawings of intended designs must be submitted for approval. Payment for wire supports in place shall be considered to be completely covered by unit price bid for other items.

All gages are American Steel and Wire Company Gages.

All contact points shall be securely welded. All wire supports shall be made such that only ends of supporting legs shall bear upon the forms. All dimensions are given to E. of bars.

## EAST BLYTHEVILLE FRISCO OVERPASS AT STA. 201+85.30

## TYPICAL DETAILS OF SUPPORTS AND SPACERS FOR REINFORCING STEEL

MISSISSIPPI & CRITTENDEN COUNTIES  
FAI 55 INTERSTATE HIGHWAY  
SECTION V

ARKANSAS STATE HIGHWAY COMMISSION  
LITTLE ROCK, ARK.

DRAWN BY B.G. DATE FEB. 1957 SCALE: NOT TO SCALE  
TRACEE BY S.M. DATE FEB. 1957  
CHECKED BY R.G.N. DATE FEB. 1957 SHEET 12 OF 12

BRIDGE NO. 3162 A & B, 3166 A & B, 3163 A & B, DRAWING NO. 10213

SVERDRUP & PARCEL, INC.  
ENGINEERS - ARCHITECTS  
ST. LOUIS, MO.

Note: Do not scale this drawing. Follow dimensions.

13435  
573204



JOB 10616  
SUMMARY OF QUANTITIES

ITEM NO	ITEM	UNIT	TOTAL
SP-801-2	DRY EXCAVATION FOR STRUCTURES	CU. YD.	5,965
SP# 802	CLASS "A" CONCRETE FOR BRIDGES	CU. YD.	3,710
SP# 802	CLASS "S" CONCRETE FOR BRIDGES	CU. YD.	5,713
SP# 803	REINFORCING STEEL	LB.	1,263,905
JOB 10616	ALUMINUM BRIDGE RAILING	LIN. FT.	8,350
SP# 807	STRUCTURAL STEEL IN GIRDER SPANS	LB.	398,300
SP# 807	STRUCTURAL STEEL IN BEAM SPANS	LB.	3,511,420
SP-804-4	BEARING PILES (14" Sq or 16" End)	LIN. FT.	48,720
SP-804-4	LOADING TEST PILES	EACH	12
929	BRIDGE NAME PLATES (TYPE "C")	EACH	3

NOTE: Estimated Quantity of Bearing Piles  
is based on 14" square precast reinforced  
concrete piles.

SUMMARY OF QUANTITIES  
MISSISSIPPI COUNTY  
F A I-55 INTERSTATE HIGHWAY  
SECTION V  
ARKANSAS STATE HIGHWAY COMMISSION  
LITTLE ROCK, ARK.  
DRAWN BY K.A. DATE DEC., 1957 SCALE NOT TO SCALE  
TRACED BY J.R.R. DATE DEC., 1957  
CHECKED BY G.R.P. DATE JAN., 1958 SHEET 1 OF 1  
SVERDRUP & PARCEL, INC.  
ENGINEERS ARCHITECTS  
ST. LOUIS, MO.  
DRAWING NO. 10214